



STYLE
1000

WEAVING
EXCELLENCE
WITH
INNOVATION



Code	Color	SOLAR OPTICAL PROPERTIES				SHGC/G VALUE g-tot (glass & blind)	
		TS	RS	AS	TV	SINGLE	
		1/4 CL	1/4 HA				
STYLE 1000 - 25%							
P02	White	36	50	14	31	0.42	0.35
P03	Antique White	37	47	16	32	0.44	0.36



PROTECTION THAT LIVES ON
MICROBAN[®]

Microban[®] antimicrobial protection inhibits the growth of stain-causing bacteria, mold and mildew on the shade.



PRODUCT CERTIFIED FOR
 LOW CHEMICAL EMISSIONS
 UL.COM/GG
 UL 2818



TS = Solar Transmittance
 RS = Solar Reflectance
 AS = Solar Absorptance
 TV = Visual Transmittance

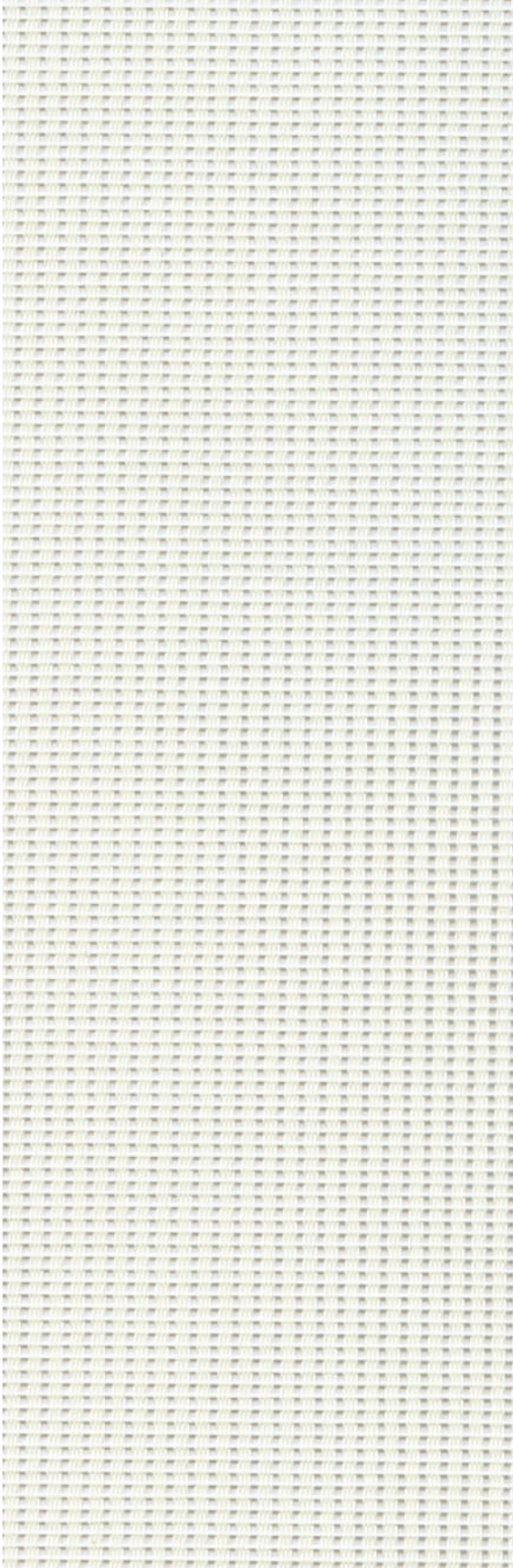
SHGC = Solar Heat Gain Coefficient

1/4 CL = 1/4" Clear Glass
 1/4 HA = 1/4" Heat Absorbing Glass

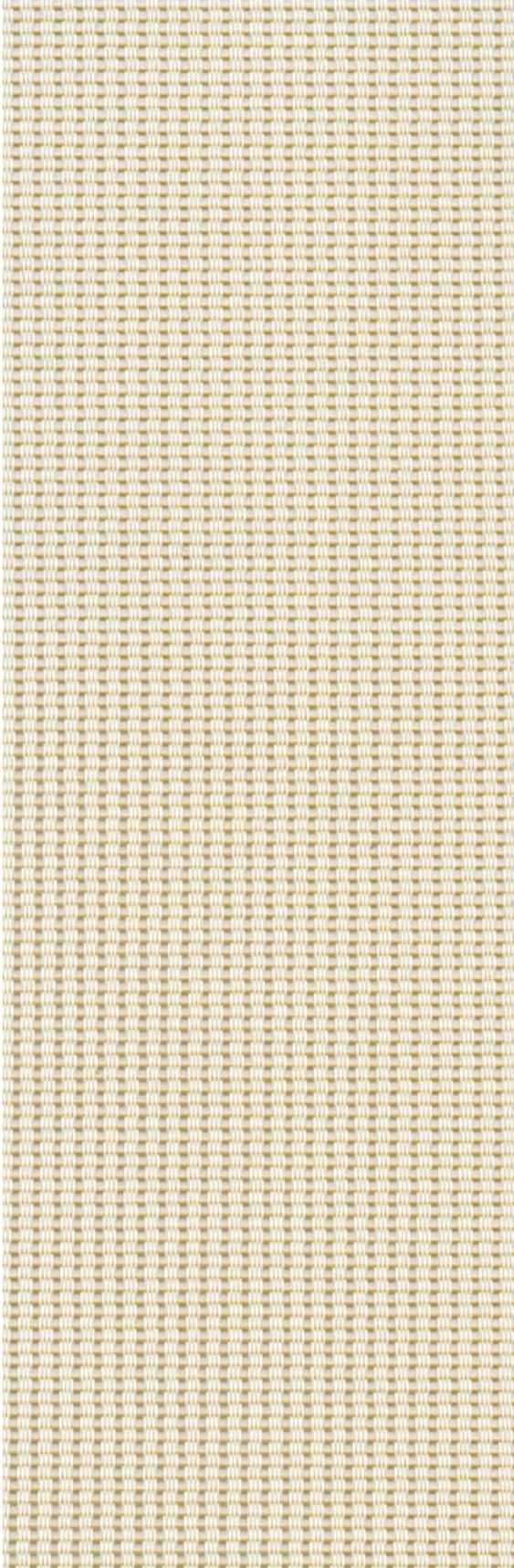
Fabrics Installed Internally
 Zero-Degree Profile Angle

For additional performance values, test references and technical definitions visit us at www.phifer.com.

P02 **White**



P03 **Antique White**



*Colors may vary based on individual computer settings and should only be used for general reference.

STYLE 1000 SPECIFICATIONS

This vinyl coated fiberglass ribbed-weave fabric offers substantial shading and excellent outward visibility with improved day-time privacy. Style 1000 can also be used in exterior shading systems.

FIRE CLASSIFICATION	California U.S. Title 19 (small scale) NFPA 101 (Class A Rating) BS 5867 Part 2 Type B Performance CAN/ULC-S 109-03 (large and small scale)	NFPA 701 TM#1 (small scale) IBC Section 803.1.1 (Class A Rating) NFPA 701 TM#2 (large scale)
BACTERIA AND FUNGAL RESISTANCE	ASTM E 2180 ASTM G21 ASTM D 3273 GREENGUARD Mold and Bacteria Standard ASTM 6329 includes Microban antimicrobial additives	AATCC30 Part 3
ENVIRONMENTAL CERTIFICATION	GREENGUARD GREENGUARD Gold Certified to these standards for low chemical emissions into indoor air during product usage	
LEAD FREE	RoHS/Directive 2002/95/EC ANSI/WCMA A 100.1-2007 for lead content US Consumer Product Safety Commission Section 101	REACH (EC 1907/2006) compliant
WARRANTY	10-year interior 5-year exterior	
TRACKLESS	TrackLess Technology minimizes the fiberglass yarns' inherent tendencies to track when being rolled up in a shade. With TrackLess Technology these same fabrics now track less, roll up straighter and reduce shade fabrication time.	

STYLE 1000

WIDTHS	36", 48", 72", 84" and 96" 91.4 cm, 121.9 cm, 182.9 cm, 213.4 cm and 243.8 cm
ROLL LENGTH	30 Linear Yards 27.4 m
COMPOSITION	35% Fiberglass 65% Vinyl on Fiberglass
MESH WEIGHT	8.8 oz/yd ² 298 g/m ²
FABRIC THICKNESS	0.020 in 0.51 mm
OPENNESS FACTOR	Approximately 25%
UV BLOCKAGE	Approximately 75%

PHIFER
INCORPORATED

P. O. Box 1700 • Tuscaloosa, Alabama 35403 -1700 USA
Phone: 205.345.2120 • FAX: 205.391.0799
Toll Free USA/Canada: 1.800.221.5497
phifer.com • ISO Registered



© SheerWeave is a registered trademark of PHIFER INCORPORATED.
© MICROBAN is a registered trademark of Microban Products Company.
™ UL, the UL logos and the UL mark are trademarks of UL LLC.
Photo courtesy of UNIFLEX WINDOW FASHIONS, Sao Paulo, Brazil.
© PHIFER INCORPORATED V17 3033830



STYLE
2000 / 2100

WEAVING
EXCELLENCE
WITH
INNOVATION



Code	Color	SOLAR OPTICAL PROPERTIES				SHGC/G VALUE g-tot (glass & blind) SINGLE	
		TS	RS	AS	TV	1/4 CL	1/4 HA
STYLE 2000 - 5%							
P02	White	20	67	13	16	0.30	0.28
P04	White/Bone	18	61	21	13	0.32	0.30
P05	White/Platinum	13	49	38	11	0.38	0.32
Q05	Bone	18	55	27	12	0.36	0.31
Q06	Bone/Platinum	12	43	45	10	0.41	0.34
Q10	Bronze	5	7	88	6	0.59	0.44
V04	Platinum	10	35	55	9	0.45	0.37
V21	Charcoal	6	4	90	6	0.61	0.44
V22	Charcoal/Gray	7	9	84	7	0.58	0.44
V24	Charcoal/Chestnut	6	7	87	6	0.59	0.44
STYLE 2100 - 10%							
P02	White	22	60	18	16	0.34	0.30
P04	White/Bone	19	54	27	14	0.37	0.31
P05	White/Platinum	16	47	37	12	0.40	0.33
Q05	Bone	19	44	37	15	0.42	0.35
Q06	Bone/Platinum	16	38	46	14	0.44	0.36
Q10	Bronze	8	5	87	9	0.61	0.44
V04	Platinum	10	31	59	9	0.47	0.37
V21	Charcoal	9	4	87	10	0.62	0.44
V22	Charcoal/Gray	11	8	81	12	0.60	0.44
V24	Charcoal/Chestnut	11	6	83	12	0.61	0.44



PROTECTION THAT LIVES ON
MICROBAN®

Microban® antimicrobial protection inhibits the growth of stain-causing bacteria, mold and mildew on the shade.



PRODUCT CERTIFIED FOR
 LOW CHEMICAL EMISSIONS
 UL.COM/GG
 UL 2818



MIF Seal of Approval



TS = Solar Transmittance
 RS = Solar Reflectance
 AS = Solar Absorptance
 TV = Visual Transmittance

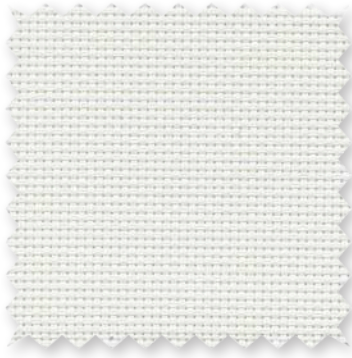
SHGC = Solar Heat Gain Coefficient

1/4 CL = 1/4" Clear Glass
 1/4 HA = 1/4" Heat Absorbing Glass

Fabrics Installed Internally
 Zero-Degree Profile Angle

For additional performance values, test references and technical definitions visit us at www.phifer.com.

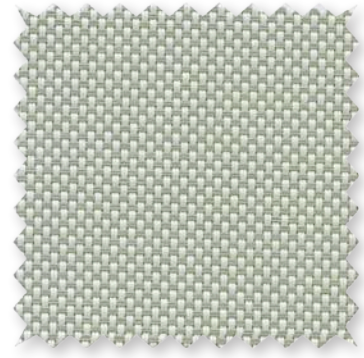
P02 **White**



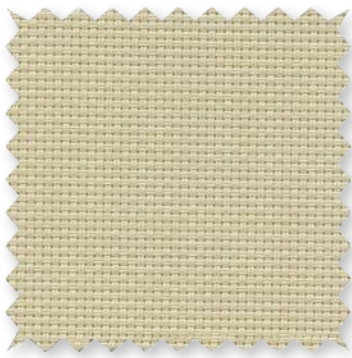
P04 **White/Bone**



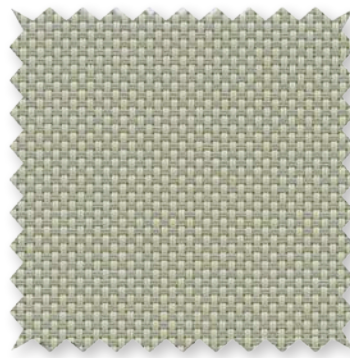
P05 **White/Platinum**



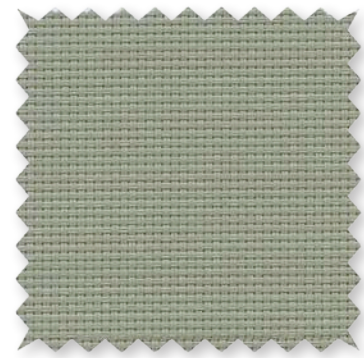
Q05 **Bone**



Q06 **Bone/Platinum**



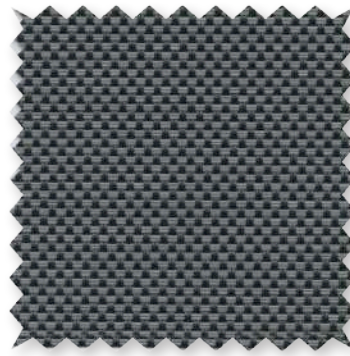
V04 **Platinum**



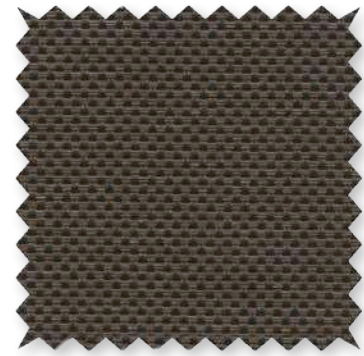
Q10 **Bronze**



V22 **Charcoal/Gray**



V24 **Charcoal/Chestnut**



V21 **Charcoal**



*Colors may vary based on individual computer settings and should only be used for general reference.

STYLE 2000 / 2100 SPECIFICATIONS

The original SheerWeave fabrics, Styles 2000 and 2100 are vinyl coated fiberglass basketweaves designed expressly for those applications that require a more opaque and non-directional fabric. Style 2000/2100 can also be used in exterior shading systems.

FIRE CLASSIFICATION	California U.S. Title 19 (small scale)	NFPA 701 TM#1 (small scale)
	NFPA 101 (Class A Rating)	IBC Section 803.1.1 (Class A Rating)
	BS 5867 Part 2 Type B Performance	NFPA 701 TM#2 (large scale)
	CAN/ULC-S 109 (large and small scale)	CAN/CGSB2-4.162-M80

Fire classifications are subject to change. Please go to phifer.com for the most current information.

BACTERIA AND FUNGAL RESISTANCE	ASTM E 2180	ASTM G21	AATCC30 Part 3	ASTM D 3273
	GREENGUARD Mold and Bacteria Standard ASTM 6329 includes Microban antimicrobial additives			
ENVIRONMENTAL CERTIFICATION	GREENGUARD	GREENGUARD Gold		
	Certified to these standards for low chemical emissions into indoor air during product usage			
LEAD FREE	RoHS/Directive 2002/95/EC	REACH (EC 1907/2006) compliant		
	ANSI/WCMA A 100.1-2007 for lead content			
	US Consumer Product Safety Commission Section 101			
WARRANTY	10-year interior	5-year exterior		
	ACOUSTICAL PERFORMANCE NRC (Noise Reduction Coefficient) and SAA (Sound Absorption Average) tested in accordance with ASTM C423-09a			
UV PROTECTION	Seal of Approval by the Melanoma International Foundation (MIF) for effectiveness in preventing sun damage to the skin or eyes			
TRACKLESS	TrackLess Technology minimizes the fiberglass yarns' inherent tendencies to track when being rolled up in a shade. With TrackLess Technology these same fabrics now track less, roll up straighter and reduce shade fabrication time.			

STYLE	2000	2100
WIDTHS	63", 98" and 126" 160 cm, 248.9 cm and 320 cm	63" and 98" 160 cm and 248.9 cm
ROLL LENGTH	30 Linear Yards 27.4 m	30 Linear Yards 27.4 m
COMPOSITION	37% Fiberglass 63% Vinyl on Fiberglass	37% Fiberglass 63% Vinyl on Fiberglass
MESH WEIGHT	14.4 oz/yd ² 488 g/m ²	12.9 oz/yd ² 437 g/m ²
FABRIC THICKNESS	0.021 in 0.53 mm	0.021 in 0.53 mm
OPENNESS FACTOR	Approximately 5%	Approximately 10%
UV BLOCKAGE	Approximately 95%	Approximately 90%
ACOUSTICAL VALUE	NRC .10 / SAA .11	NRC .05 / SAA .06

PHIFER
INCORPORATED

P. O. Box 1700 • Tuscaloosa, Alabama 35403 -1700 USA
Phone: 205.345.2120 • FAX: 205.391.0799
Toll Free USA/Canada: 1.800.221.5497
phifer.com • ISO Registered



© SheerWeave is a registered trademark of PHIFER INCORPORATED.
© MICROBAN is a registered trademark of Microban Products Company.
™ UL, the UL logos and the UL mark are trademarks of UL LLC.
Photo courtesy of Draper INC., Spiceland, Indiana, USA.
© PHIFER INCORPORATED V18 3033831



STYLE
2500 / 2410 / 2390 / 2360

WEAVING
EXCELLENCE
WITH
INNOVATION



Code	Color	SOLAR OPTICAL PROPERTIES				SHGC/G VALUE	
		TS	RS	AS	TV	SINGLE 1/4 CL	INSULATING 1 HA
STYLE 2500 - 1%							
P12	Oyster	15	68	17	13	0.28	0.22
P13	Oyster/Beige	10	60	30	9	0.31	0.23
P14	Oyster/Pearl Gray	7	50	43	6	0.37	0.25
Q20	Beige	7	50	43	6	0.37	0.25
Q21	Beige/Pearl Gray	5	42	53	5	0.40	0.28
V20	Pearl Gray	3	32	65	3	0.45	0.30
V21	Charcoal	1	4	95	1	0.60	0.37
V22	Charcoal/Gray	2	8	90	3	0.58	0.36
V24	Charcoal/Chestnut	1	6	93	1	0.59	0.37
V32	Charcoal/Alpaca	1	16	83	2	0.54	0.34
STYLE 2410 - 3%							
P12	Oyster	17	64	19	12	0.30	0.23
P13	Oyster/Beige	11	55	34	8	0.34	0.24
P14	Oyster/Pearl Gray	9	44	47	7	0.40	0.27
Q20	Beige	10	48	42	7	0.38	0.26
Q21	Beige/Pearl Gray	7	39	54	5	0.43	0.29
V20	Pearl Gray	6	31	63	5	0.46	0.30
V21	Charcoal	3	3	94	3	0.61	0.37
V22	Charcoal/Gray	3	9	88	3	0.57	0.36
V24	Charcoal/Chestnut	3	6	91	3	0.59	0.37
V32	Charcoal/Alpaca	4	20	76	5	0.52	0.33
STYLE 2390 - 5%							
P12	Oyster	21	61	18	14	0.33	0.23
P13	Oyster/Beige	17	54	29	12	0.36	0.25
P14	Oyster/Pearl Gray	14	45	41	10	0.40	0.28
Q20	Beige	14	47	39	10	0.39	0.27
Q21	Beige/Pearl Gray	11	38	51	9	0.44	0.29
V20	Pearl Gray	10	31	59	9	0.47	0.30
V21	Charcoal	4	4	92	5	0.60	0.37
V22	Charcoal/Gray	5	9	86	6	0.58	0.36
V24	Charcoal/Chestnut	6	6	88	6	0.60	0.37
V32	Charcoal/Alpaca	7	18	75	9	0.54	0.34
STYLE 2360 - 10%							
P12	Oyster	27	57	16	21	0.37	0.25
P13	Oyster/Beige	24	51	25	19	0.39	0.27
P14	Oyster/Pearl Gray	20	45	35	16	0.42	0.28
Q20	Beige	19	44	37	16	0.42	0.28
Q21	Beige/Pearl Gray	17	39	44	15	0.44	0.30
V20	Pearl Gray	16	30	54	14	0.49	0.31
V21	Charcoal	10	4	86	11	0.62	0.37
V22	Charcoal/Gray	12	8	80	14	0.60	0.37
V24	Charcoal/Chestnut	11	5	84	12	0.61	0.37
V32	Charcoal/Alpaca	12	15	73	16	0.57	0.35

PROTECTION THAT LIVES ON
MICROBAN®

Microban® antimicrobial protection inhibits the growth of stain-causing bacteria, mold and mildew on the shade.



PRODUCT CERTIFIED FOR
 LOW CHEMICAL EMISSIONS
 UL.COM/GG
 UL 2818



MIF Seal of Approval



TS = Solar Transmittance
 RS = Solar Reflectance
 AS = Solar Absorptance
 TV = Visual Transmittance

SHGC = Solar Heat Gain Coefficient

1/4 CL = 1/4" Clear Glass
 1 HA = 1" Heat Absorbing Glass

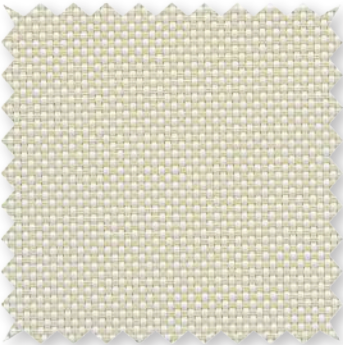
Fabrics Installed Internally
 Zero-Degree Profile Angle

For additional performance values, test references and technical definitions visit us at www.phifer.com.

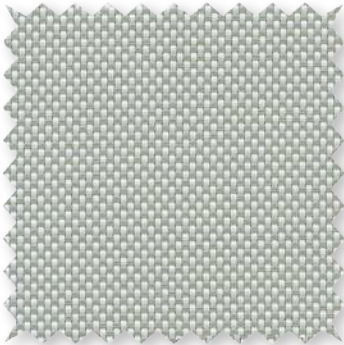
P12 Oyster



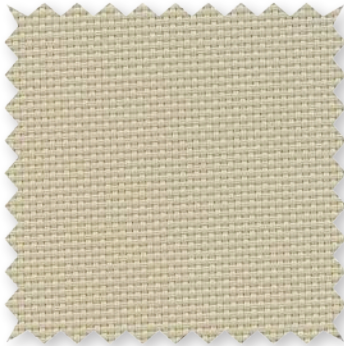
P13 Oyster/Beige



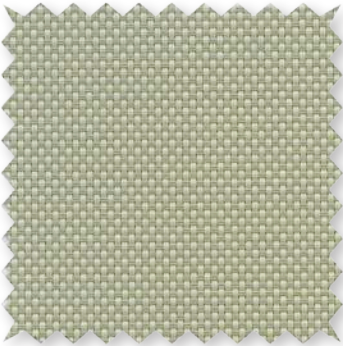
P14 Oyster/Pearl Gray



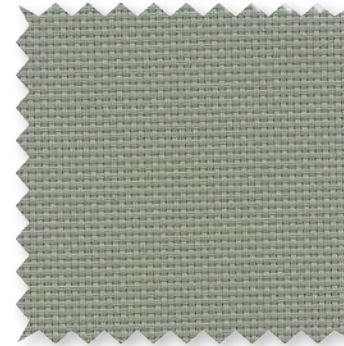
Q20 Beige



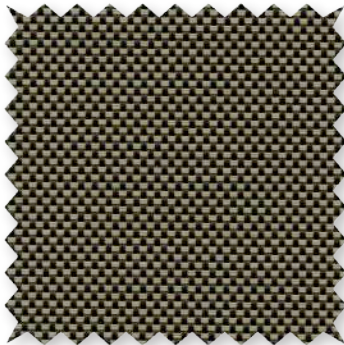
Q21 Beige/Pearl Gray



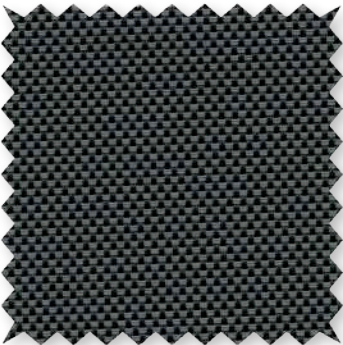
V20 Pearl Gray



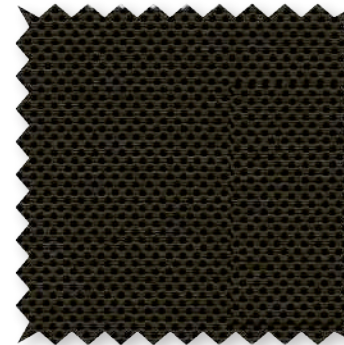
V32 Charcoal/Alpaca



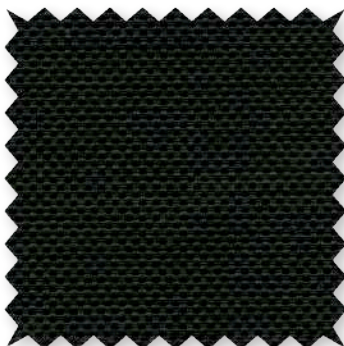
V22 Charcoal/Gray



V24 Charcoal/Chestnut



V21 Charcoal



*Colors may vary based on individual computer settings and should only be used for general reference.

STYLE 2500 / 2410 / 2390 / 2360 SPECIFICATIONS

Manufactured with ease of fabrication in mind, Styles 2500, 2410, 2390 and 2360 are full basketweaves designed expressly for those applications which require a more opaque and nondirectional fabric. Style 2500/2410/2390/2360 can also be used in exterior roller shades.

FIRE CLASSIFICATION	California U.S. Title 19 (small scale) NFPA 101 (Class A Rating) BS 5867 Part 2 Type B Performance CAN/ULC-S 109-03 (large and small scale)	NFPA 701 TM#1 (small scale) IBC Section 803.1.1 (Class A Rating) NFPA 701 TM#2 (large scale) CAN/CGSB2-4.162-M80	
BACTERIA AND FUNGAL RESISTANCE	ASTM E 2180 GREENGUARD Mold and Bacteria Standard ASTM 6329 includes Microban antimicrobial additives	ASTM G21 AATCC30 Part 3	ASTM D 3273
ENVIRONMENTAL CERTIFICATION	GREENGUARD Certified to these standards for low chemical emissions into indoor air during product usage	GREENGUARD Gold	
LEAD FREE	RoHS/Directive 2002/95/EC ANSI/WCMA A 100.1-2007 for lead content US Consumer Product Safety Commission Section 101	REACH (EC 1907/2006) compliant	
WARRANTY	10-year interior	5-year exterior	
ACOUSTICAL PERFORMANCE	NRC (Noise Reduction Coefficient) and SAA (Sound Absorption Average) tested in accordance with ASTM C423-09a		
UV PROTECTION	Seal of Approval by the Melanoma International Foundation (MIF) for effectiveness in preventing sun damage to the skin or eyes		
TRACKLESS	TrackLess Technology minimizes the fiberglass yarns' inherent tendencies to track when being rolled up in a shade. With TrackLess Technology these same fabrics now track less, roll up straighter and reduce shade fabrication time.		

STYLE	2500	2410	2390	2360
WIDTHS	63", 98" and 126" 160 cm, 248.9 cm and 320 cm	63", 98" and 126" 160 cm, 248.9 cm and 320 cm	63", 98" and 126" 160 cm, 248.9 cm and 320 cm	63" and 98" 160 cm and 248.9 cm
ROLL LENGTH	30 Linear Yards 27.4 m	30 Linear Yards 27.4 m	30 Linear Yards 27.4 m	30 Linear Yards 27.4 m
COMPOSITION	37% Fiberglass 63% Vinyl on Fiberglass	35% Fiberglass 65% Vinyl on Fiberglass	35% Fiberglass 65% Vinyl on Fiberglass	35% Fiberglass 65% Vinyl on Fiberglass
MESH WEIGHT	16.2 oz/yd ² 549 g/m ²	14.1 oz/yd ² 478 g/m ²	11.8 oz/yd ² 400 g/m ²	10.4 oz/yd ² 353 g/m ²
FABRIC THICKNESS	0.024 in 0.61 mm	0.020 in 0.51 mm	0.017 in 0.43 mm	0.019 in 0.48 mm
OPENNESS FACTOR	Approximately 1%	Approximately 3%	Approximately 5%	Approximately 10%
UV BLOCKAGE	Approximately 99%	Approximately 97%	Approximately 95%	Approximately 90%
ACOUSTICAL VALUE	NRC .55 / SAA .54	NRC .20 / SAA .21	NRC .10 / SAA .12	NRC .05 / SAA .06

PHIFER
INCORPORATED

P. O. Box 1700 • Tuscaloosa, Alabama 35403 -1700 USA
Phone: 205.345.2120 • FAX: 205.391.0799
Toll Free USA/Canada: 1.800.221.5497
phifer.com • ISO Registered



© SheerWeave is a registered trademark of PHIFER INCORPORATED.
© MICROBAN is a registered trademark of Microban Products Company.
™ UL, the UL logos and the UL mark are trademarks of UL LLC.
Cover photo courtesy of GRUPO AMERICAN CLASSIC, Monterrey, México.
© PHIFER INCORPORATED V17B 3033832



STYLE
2701 / 2703 / 2705 / 2710

WEAVING
EXCELLENCE
WITH
INNOVATION



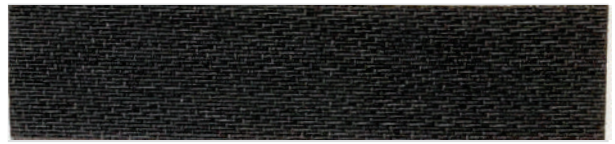
Code Color		SOLAR OPTICAL PROPERTIES				SHGC/G VALUE g-tot (glass & blind)		SOLAR OPTICAL PROPERTIES				SHGC/G VALUE g-tot (glass & blind)			
		TS	RS	AS	TV	SINGLE 1/4 CL	INSULATING 1 HA	TS	RS	AS	TV	SINGLE 1/4 CL	INSULATING 1 HA		
STYLE 2701 FACE - 1%								STYLE 2701 BACK							
P12	Oyster	21	64	15	17	0.31	0.23	21	64	15	17	0.31	0.23		
P13	Oyster/Beige	15	57	28	12	0.33	0.23	16	56	28	13	0.40	0.28		
P14	Oyster/Pearl Gray	8	54	38	4	0.34	0.24	8	33	59	6	0.53	0.35		
P28	Oyster/Charcoal	5	39	56	6	0.41	0.28	4	10	86	4	0.66	0.41		
P91	Oyster/Pewter	6	43	51	6	0.39	0.26	5	19	76	5	0.61	0.38		
P92	Oyster/Chestnut	6	41	53	6	0.40	0.28	5	13	82	5	0.64	0.40		
V21	Charcoal	3	4	93	3	0.69	0.43	3	4	93	3	0.69	0.43		
V22	Charcoal/Gray	3	14	83	3	0.63	0.40	3	6	91	3	0.68	0.42		
V64	Charcoal/Slate	4	30	66	4	0.53	0.35	4	10	86	4	0.66	0.41		
V65	Charcoal/Taupe	4	25	71	3	0.56	0.36	4	9	88	3	0.67	0.41		
V66	Charcoal/Brown	4	17	78	4	0.62	0.39	4	7	89	4	0.68	0.42		
STYLE 2703 FACE - 3%								STYLE 2703 BACK							
P12	Oyster	22	62	16	19	0.32	0.23	22	62	16	19	0.32	0.23		
P13	Oyster/Beige	15	58	27	13	0.33	0.24	18	33	49	16	0.55	0.35		
P14	Oyster/Pearl Gray	9	53	38	9	0.35	0.25	11	49	40	10	0.43	0.30		
P28	Oyster/Charcoal	7	40	53	8	0.42	0.28	6	10	84	6	0.66	0.41		
P91	Oyster/Pewter	8	44	48	9	0.40	0.27	8	19	73	8	0.61	0.39		
P92	Oyster/Chestnut	7	42	51	8	0.41	0.28	8	14	78	8	0.64	0.40		
V21	Charcoal	5	4	91	5	0.70	0.43	5	4	91	5	0.70	0.43		
V22	Charcoal/Gray	5	13	82	5	0.64	0.40	5	6	89	5	0.68	0.42		
V64	Charcoal/Slate	7	27	65	7	0.56	0.36	7	10	83	7	0.67	0.41		
V65	Charcoal/Taupe	6	24	70	6	0.58	0.37	6	8	86	6	0.67	0.42		
V66	Charcoal/Brown	6	17	77	6	0.62	0.39	6	7	87	6	0.68	0.42		
STYLE 2705 FACE - 5%								STYLE 2705 BACK							
P12	Oyster	22	62	16	20	0.32	0.23	22	62	16	20	0.32	0.23		
P13	Oyster/Beige	23	54	23	21	0.37	0.26	23	48	29	21	0.47	0.31		
P14	Oyster/Pearl Gray	19	51	30	21	0.38	0.26	17	34	49	16	0.54	0.35		
P28	Oyster/Charcoal	12	40	48	14	0.43	0.29	11	11	78	12	0.67	0.41		
P91	Oyster/Pewter	11	46	43	12	0.39	0.27	13	22	65	14	0.61	0.38		
P92	Oyster/Chestnut	12	43	45	13	0.41	0.28	12	20	68	12	0.62	0.39		
V21	Charcoal	7	4	89	7	0.70	0.43	7	4	89	7	0.70	0.43		
V22	Charcoal/Gray	8	6	86	8	0.69	0.43	8	12	80	8	0.65	0.41		
V64	Charcoal/Slate	9	25	66	8	0.58	0.37	9	9	83	8	0.68	0.42		
V65	Charcoal/Taupe	9	21	70	8	0.60	0.38	9	8	84	8	0.68	0.42		
V66	Charcoal/Brown	9	16	75	8	0.64	0.40	9	7	85	8	0.69	0.42		
STYLE 2710 FACE - 10%								STYLE 2710 BACK							
P12	Oyster	34	54	12	32	0.39	0.27	34	54	12	32	0.39	0.27		
P13	Oyster/Beige	29	51	20	28	0.40	0.27	29	47	24	28	0.49	0.32		
P28	Oyster/Charcoal	21	37	42	24	0.46	0.30	20	17	63	21	0.65	0.40		
P91	Oyster/Pewter	24	43	33	25	0.44	0.29	21	25	54	23	0.61	0.38		
P92	Oyster/Chestnut	25	41	34	26	0.45	0.30	22	20	58	23	0.64	0.40		
V21	Charcoal	15	4	81	15	0.72	0.44	15	3	81	15	0.72	0.44		
V22	Charcoal/Gray	15	10	76	14	0.68	0.42	15	5	80	14	0.71	0.43		
V64	Charcoal/Slate	15	16	69	15	0.65	0.40	15	7	78	15	0.70	0.43		
V65	Charcoal/Taupe	15	17	69	14	0.64	0.40	15	7	78	14	0.70	0.43		
V66	Charcoal/Brown	14	12	74	14	0.67	0.41	14	6	80	14	0.71	0.43		

TS = Solar Transmittance | RS = Solar Reflectance | AS = Solar Absorption | TV = Visual Transmittance | SHGC = Solar Heat Gain Coefficient
1/4 CL = 1/4" Clear Glass | 1 HA = 1" Heat Absorbing Glass | Fabrics Installed Internally | Zero-Degree Profile Angle
For additional performance values, test references and technical definitions visit us at www.phifer.com.

P12 Oyster



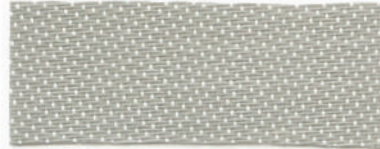
NEW
V21 Charcoal



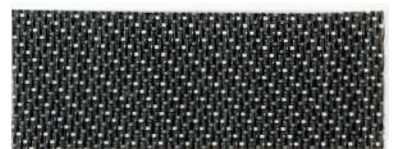
P13 Oyster / Beige - face
Oyster / Beige - back



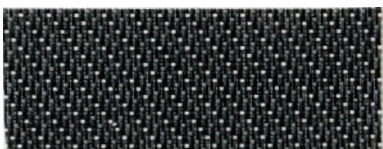
P14* Oyster / Pearl Gray - face
Oyster / Pearl Gray - back



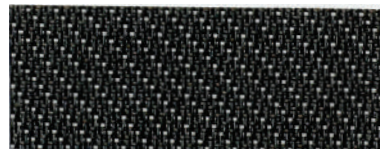
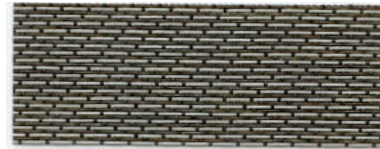
NEW
V64 Charcoal / Slate - face
Charcoal / Slate - back



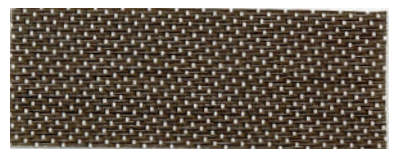
NEW
V65 Charcoal / Taupe - face
Charcoal / Taupe - back



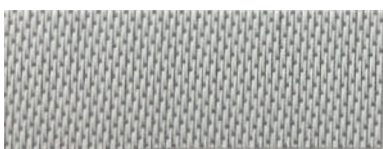
NEW
V66 Charcoal / Brown - face
Charcoal / Brown - back



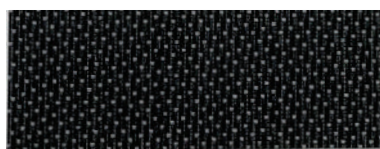
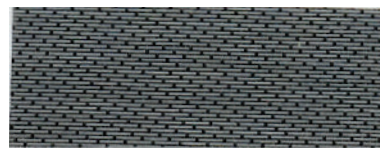
P92 Oyster / Chestnut - face
Oyster / Chestnut - back



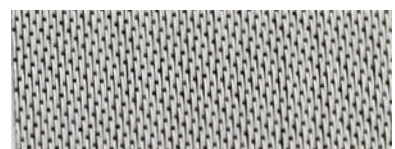
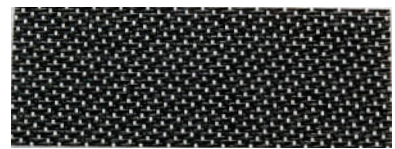
P91 Oyster / Pewter - face
Oyster / Pewter - back



NEW
V22 Charcoal / Gray - face
Charcoal / Gray - back



P28 Oyster / Charcoal - face
Oyster / Charcoal - back



*Colors may vary based on individual computer settings and should only be used for general reference.



Microban® antimicrobial protection inhibits the growth of stain-causing bacteria, mold and mildew on the shade.



PRODUCT CERTIFIED FOR
LOW CHEMICAL EMISSIONS
UL.COM/GG
UL 2818



MIF Seal
of Approval



* P14 Oyster / Pearl Gray currently available in 2701, 2703 and 2705

STYLE 2701 / 2703 / 2705 / 2710 SPECIFICATIONS

Styles 2701, 2703, 2705 and 2710 are woven from a unique twill pattern that displaces the individual yarns to create a two-sided fabric for maximum performance in heat reduction, glare reduction and improved visibility. Style 2701/2703/2705/2710 can also be used in exterior roller shades.

FIRE CLASSIFICATION	California U.S. Title 19 (small scale)	NFPA 701 TM#1 (small scale)
	NFPA 101 (Class A Rating)	IBC Section 803.1.1 (Class A Rating)
	BS 5867 Part 2 Type B Performance	NFPA 701 TM#2 (large scale)
	CAN/ULC-S 109-03 (large and small scale)	CAN/CGSB2-4.162-M80

BACTERIA AND FUNGAL RESISTANCE	ASTM E 2180	ASTM G21	AATCC30 Part 3	ASTM D 3273
	GREENGUARD Mold and Bacteria Standard ASTM 6329			
	includes Microban antimicrobial additives			

ENVIRONMENTAL CERTIFICATION	GREENGUARD	GREENGUARD Gold
	Certified to these standards for low chemical emissions into indoor air during product usage	

LEAD FREE	RoHS/Directive 2002/95/EC	REACH (EC 1907/2006) compliant
	ANSI/WCMA A 100.1-2007 for lead content	
	US Consumer Product Safety Commission Section 101	

WARRANTY	10-year interior	5-year exterior
-----------------	------------------	-----------------

ACOUSTICAL PERFORMANCE	NRC (Noise Reduction Coefficient) and SAA (Sound Absorption Average) tested in accordance with ASTM C423-09a
-------------------------------	--

UV PROTECTION	Seal of Approval by the Melanoma International Foundation (MIF) for effectiveness in preventing sun damage to the skin or eyes
----------------------	--

TRACKLESS	TrackLess Technology minimizes the fiberglass yarns' inherent tendencies to track when being rolled up in a shade. With TrackLess Technology these same fabrics now track less, roll up straighter and reduce shade fabrication time.
------------------	---

STYLE	2701	2703	2705	2710
WIDTHS	63", 98" and 126" 160.0 cm, 248.9 cm and 320 cm	63", 98" and 126" 160.0 cm, 248.9 cm and 320 cm	63", 98" and 126" 160.0 cm, 248.9 cm and 320 cm	63" and 98" 160.0 cm and 248.9 cm
ROLL LENGTH	30 Linear Yards 27.4 m	30 Linear Yards 27.4 m	30 Linear Yards 27.4 m	30 Linear Yards 27.4 m
COMPOSITION	36% Fiberglass 64% Vinyl on Fiberglass	36% Fiberglass 64% Vinyl on Fiberglass	34% Fiberglass 66% Vinyl on Fiberglass	34% Fiberglass 66% Vinyl on Fiberglass
MESH WEIGHT	14.6 oz/yd ² 495 g/m ²	14.0 oz/yd ² 475 g/m ²	11.8 oz/yd ² 379 g/m ²	10.4 oz/yd ² 353 g/m ²
FABRIC THICKNESS	0.027 in 0.66 mm	0.028 in 0.71 mm	0.025 in 0.64 mm	0.025 in 0.64 mm
OPENNESS FACTOR	Approximately 1%	Approximately 3%	Approximately 5%	Approximately 10%
UV BLOCKAGE	Approximately 99%	Approximately 97%	Approximately 95%	Approximately 90%
ACOUSTICAL VALUE	NRC .15 / SAA .15	NRC .10 / SAA .09	NRC .05 / SAA .06	NRC .05 / SAA .05

PHIFER
INCORPORATED

P. O. Box 1700 • Tuscaloosa, Alabama 35403 -1700 USA
Phone: 205.345.2120 • FAX: 205.391.0799
Toll Free USA/Canada: 1.800.221.5497
phifer.com • ISO Registered



© SheerWeave is a registered trademark of PHIFER INCORPORATED.
© MICROBAN is a registered trademark of Microban Products Company.
™ UL, the UL logos and the UL mark are trademarks of UL LLC.
Photo courtesy of Draper INC., Spiceland, Indiana, USA.
© PHIFER INCORPORATED V18 3033833



STYLE
3000

WEAVING
EXCELLENCE
WITH
INNOVATION



Code	Color	SOLAR OPTICAL PROPERTIES				SHGC/G VALUE	
		TS	RS	AS	TV	<i>SINGLE</i> 1/4 CL	<i>INSULATING</i> 1 HA
STYLE 3000 - 14%							
P01	Pearl White	24	62	14	21	0.33	0.23
Q01	Mushroom Sand	22	45	33	21	0.42	0.28
Q02	Custard Cream	23	53	24	22	0.37	0.26
Q04	Chocolate	13	4	83	15	0.63	0.38
Q17	Sand Dollar	17	46	37	15	0.41	0.27
Q18	Espresso	15	9	76	16	0.60	0.37
Q19	Honey Sage	16	31	53	16	0.49	0.31
V01	Pale Grey	19	40	41	19	0.44	0.29
V02	Ninja Grey	12	8	80	14	0.60	0.37



PROTECTION THAT LIVES ON 
MICROBAN[®]
 Microban[®] antimicrobial protection inhibits the growth of stain-causing bacteria, mold and mildew on the shade.



PRODUCT CERTIFIED FOR
 LOW CHEMICAL EMISSIONS
 UL.COM/GG
 UL 2818



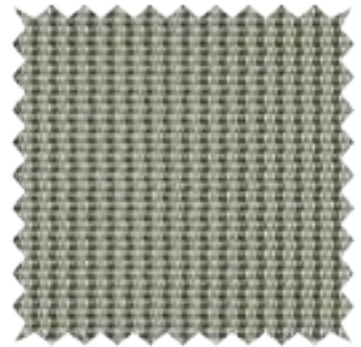
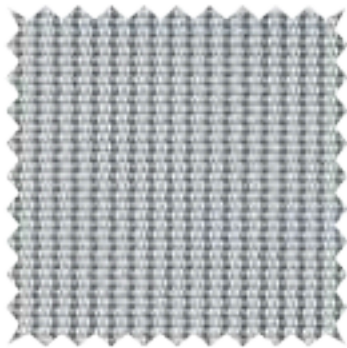
TS = Solar Transmittance
 RS = Solar Reflectance
 AS = Solar Absorptance
 TV = Visual Transmittance

SHGC = Solar Heat Gain Coefficient

1/4 CL = 1/4" Clear Glass
 1 HA = 1" Heat Absorbing Glass

Fabrics Installed Internally
 Zero-Degree Profile Angle

For additional performance values, test references and technical definitions visit us at www.phifer.com.



STYLE 3000 SPECIFICATIONS

Combining vinyl coated fiberglass and polyester yarns, Style 3000 is woven into a unique rib weave for a distinct look and color pallet. The 14% openness of Style 3000 lets in more natural light while providing excellent outward visibility. Style 3000 can also be used in exterior shading systems.

FIRE CLASSIFICATION	NFPA 701 TM#1 (small scale) IBC Section 803.1 (Class A Rating)	NFPA 101 (Class A Rating) NFPA 701 TM#2 (large scale)
BACTERIA AND FUNGAL RESISTANCE	ASTM E 2180 ASTM G21 GREENGUARD Mold and Bacteria Standard ASTM 6329 includes Microban antimicrobial additives	AATCC30 Part 3 ASTM D 3273
ENVIRONMENTAL CERTIFICATION	GREENGUARD GREENGUARD Gold	Certified to these standards for low chemical emissions into indoor air during product usage
LEAD FREE	RoHS/Directive 2002/95/EC ANSI/WCMA A 100.1-2007 for lead content US Consumer Product Safety Commission Section 101	REACH (EC 1907/2006) compliant
WARRANTY	10-year interior 5-year exterior	
TRACKLESS	TrackLess Technology minimizes the fiberglass yarns' inherent tendencies to track when being rolled up in a shade. With TrackLess Technology these same fabrics now track less, roll up straighter and reduce shade fabrication time.	

STYLE 3000

WIDTHS	72" and 96" 182.9 cm and 243.8 cm
ROLL LENGTH	30 Linear Yards 27.4 m
COMPOSITION	35% Fiberglass, 65% Vinyl on Fiberglass 31% Polyester, 69% Vinyl on Polyester
MESH WEIGHT	13.46 oz/yd ² 456 g/m ²
FABRIC THICKNESS	0.028 in 0.71 mm
OPENNESS FACTOR	Approximately 14%
UV BLOCKAGE	Approximately 86%



P. O. Box 1700 • Tuscaloosa, Alabama 35403-1700 USA
 Phone: 205.345.2120 • FAX: 205.391.0799
 Toll Free USA/Canada: 1.800.221.5497
 phifer.com • ISO Registered



© SheerWeave is a registered trademark of PHIFER INCORPORATED.
 © MICROBAN is a registered trademark of Microban Products Company.
 ™ UL, the UL logos and the UL mark are trademarks of UL LLC.
 Photo courtesy of Hunter Douglas, USA.
 © PHIFER INCORPORATED V17 3033838



SHEERWEAVE
BY PHIFER

STYLE
4400 / 4000 / 4100
with DOW ECOLIBRIUM™
Bio-based Plasticizer

WEAVING
EXCELLENCE
WITH
INNOVATION



The DOW ECOLIBRIUM Value Proposition:

DOW ECOLIBRIUM™ Bio-Based Plasticizers offer a renewable alternative that is phthalate-free, offering a more sustainable option while having the same great performance and feel of current materials.

- Lowers greenhouse gas emissions as much as 40% vs. existing PVC compounds
- 98% of the plasticizer is derived from non fossil fuel based feed stock.
- Lower carbon footprint*
- Phthalate-free
- LEED credits for rapidly renewable content may be available**
- RoHS compliant
- Ability for compound to be recycled in a standard vinyl stream
- Maintains all of the established benefits of traditional vinyl such as durability, cleanability and fabric longevity

*Based on Lifecycle Analysis (LCA) conducted by The Dow Chemical Company and third party reviewed.
**See website www.usgbc.org for more information.

Code	Color	SOLAR OPTICAL PROPERTIES				SHGC/G VALUE	
		TS	RS	AS	TV	SINGLE 1/4 CL	INSULATING 1 HA
STYLE 4400 - 3%							
U58	Eco/Chalk	12	70	18	7	0.26	0.13
U59	Eco/Alabaster	10	62	28	6	0.30	0.15
U60	Eco/Pebblestone	9	51	40	6	0.37	0.24
U61	Eco/Greystone	6	39	55	5	0.42	0.28
U62	Eco/Granite	6	48	46	5	0.37	0.17
U63	Eco/Pewter	3	26	71	2	0.49	0.22
U64	Eco/Ash	3	10	87	4	0.57	0.36
U65	Eco/Ebony	3	3	94	3	0.61	0.37
U66	Eco/Tobacco	3	5	92	3	0.60	0.37
STYLE 4000 - 5%							
U58	Eco/Chalk	16	68	16	12	0.28	0.22
U59	Eco/Alabaster	15	57	28	13	0.34	0.24
U60	Eco/Pebblestone	14	49	37	12	0.38	0.26
U61	Eco/Greystone	10	34	56	9	0.45	0.21
U62	Eco/Granite	11	41	48	10	0.42	0.20
U63	Eco/Pewter	8	27	65	9	0.49	0.31
U64	Eco/Ash	7	11	82	8	0.57	0.26
U65	Eco/Ebony	6	5	89	8	0.60	0.37
U66	Eco/Tobacco	7	5	88	8	0.61	0.27
STYLE 4100 - 10%							
U58	Eco/Chalk	18	66	16	15	0.30	0.22
U59	Eco/Alabaster	19	56	25	16	0.36	0.25
U60	Eco/Pebblestone	16	48	36	15	0.39	0.27
U61	Eco/Greystone	14	35	51	14	0.46	0.30
U62	Eco/Granite	15	42	43	14	0.43	0.20
U63	Eco/Pewter	12	26	62	14	0.50	0.32
U64	Eco/Ash	10	10	80	11	0.58	0.27
U65	Eco/Ebony	10	4	86	11	0.62	0.37
U66	Eco/Tobacco	10	5	85	11	0.61	0.28



Microban® antimicrobial protection inhibits the growth of stain-causing bacteria, mold and mildew on the shade.



PRODUCT CERTIFIED FOR LOW CHEMICAL EMISSIONS
UL.COM/GG
UL 2818



MIF Seal of Approval



TS = Solar Transmittance
RS = Solar Reflectance
AS = Solar Absorptance
TV = Visual Transmittance

SHGC = Solar Heat Gain Coefficient

1/4 CL = 1/4" Clear Glass
1 HA = 1" Heat Absorbing Glass

Fabrics Installed Internally
Zero-Degree Profile Angle

For additional performance values, test references and technical definitions visit us at www.phifer.com.

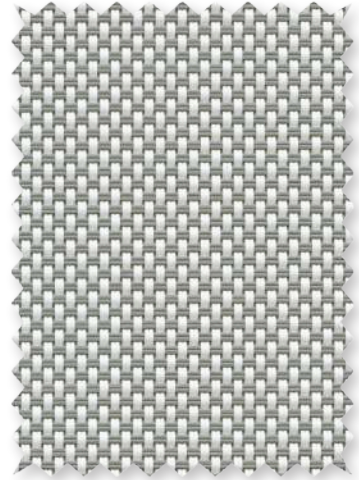
U58 Eco/Chalk



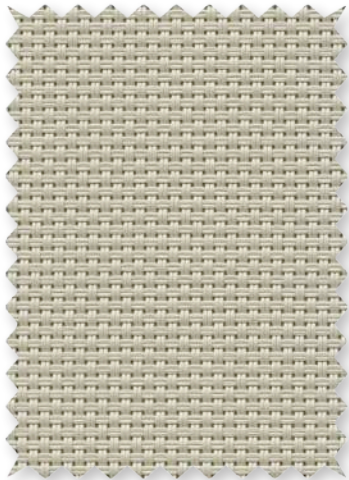
U59 Eco/Alabster



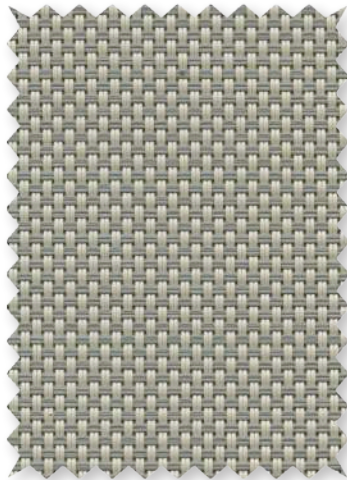
U62 Eco/Granite



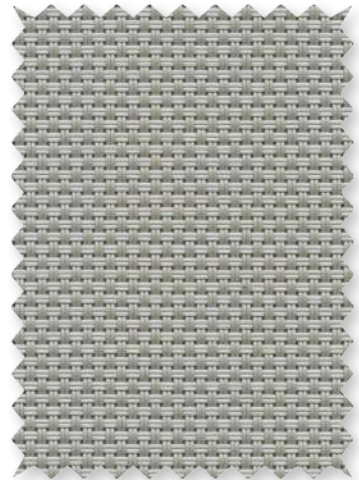
U60 Eco/Pebblestone



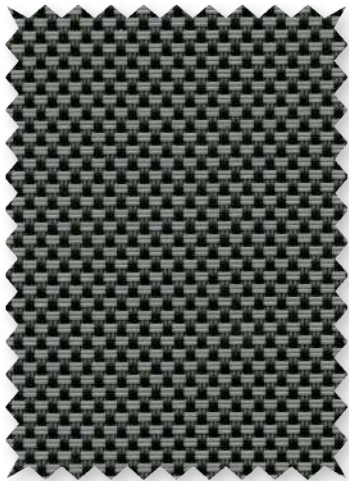
U61 Eco/Greystone



U63 Eco/Pewter



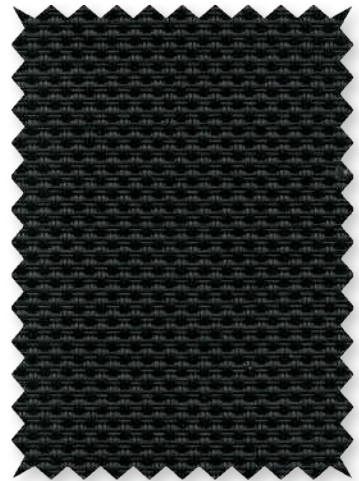
U64 Eco/Ash



U66 Eco/Tobacco



U65 Eco/Ebony



STYLE 4400 / 4000 / 4100 SPECIFICATIONS

As the only sun control fabrics in the market to use DOW's unique ECOLIBRIUM bio-based plasticizer, Styles 4400, 4000 and 4100 combine the durability of vinyl coated polyester with the latest in green PVC technology. ECOLIBRIUM is a renewable alternative to traditional plasticizers that lowers greenhouse gas emissions as much as 40% vs existing PVC compounds. Style 4400/4000/4100 with DOW ECOLIBRIUM is phthalate-free, lead-free and RoHS compliant. These fabrics maintain all of the established benefits of traditional vinyl such as durability, cleanability and fabric longevity. Style 4400/4000/4100 can also be used in exterior shading systems.

FIRE CLASSIFICATION	California U.S. Title 19 (small scale)	NFPA 701 TM#1 (small scale)
	NFPA 101 (Class A Rating)	IBC Section 803.1.1 (Class A Rating)
	BS 5867 Part 2 Type B Performance	CAN/ULC-S 109 (large and small scale)
	NFPA 701 TM#2 (large scale)	CAN/CGSB2-4.162-M80

Fire classifications are subject to change. Please go to www.phifer.com for the most current information.

BACTERIA AND FUNGAL RESISTANCE	ASTM E 2180	ASTM G21	AATCC30 Part 3	ASTM D 3273
	GREENGUARD Mold and Bacteria Standard ASTM 6329 includes Microban antimicrobial additives			
ENVIRONMENTAL CERTIFICATION	GREENGUARD	GREENGUARD Gold		
	Certified to these standards for low chemical emissions into indoor air during product usage DOW ECOLIBRIUM Plasticizer is a USDA Certified Bio-Based Product			
LEAD FREE	RoHS/Directive 2002/95/EC	REACH (EC 1907/2006) compliant		
	ANSI/WCMA A 100.1-2007 for lead content			
	US Consumer Product Safety Commission Section 101			
WARRANTY	10-year interior	5-year exterior		
ACOUSTICAL PERFORMANCE	NRC (Noise Reduction Coefficient) and SAA (Sound Absorption Average) tested in accordance with ASTM C423-09a			
UV PROTECTION	Seal of Approval by the Melanoma International Foundation (MIF) for effectiveness in preventing sun damage to the skin or eyes			

STYLE	4400	4000	4100
WIDTHS	63", 84", 98" and 126" 160 cm, 213.4 cm, 248.9 cm and 320 cm	63", 84", 98" and 126" 160 cm, 213.4 cm, 248.9 cm and 320 cm	63", 84" and 98" 160 cm, 213.4 cm and 248.9 cm
ROLL LENGTH	30 Linear Yards 27.4 m	30 Linear Yards 27.4 m	30 Linear Yards 27.4 m
COMPOSITION	25% Polyester 75% Vinyl on Polyester	25% Polyester 75% Vinyl on Polyester	25% Polyester 75% Vinyl on Polyester
	(Over 50% of compound components are derived from crop-based feed stocks and minerals. Over 2/3 of total compound is derived from non fossil fuel based materials.)		
MESH WEIGHT	19.9 oz/yd ² 675 g/m ²	18.0 oz/yd ² 610 g/m ²	16.7 oz/yd ² 566 g/m ²
FABRIC THICKNESS	0.034 in 0.86 mm	0.032 in 0.81 mm	0.032 in 0.81 mm
OPENNESS FACTOR	Approximately 3%	Approximately 5%	Approximately 10%
UV BLOCKAGE	Approximately 97%	Approximately 95%	Approximately 90%
ACOUSTICAL VALUE	NRC .20 / SAA .19	NRC .10 / SAA .11	NRC .05 / SAA .05

PHIFER
INCORPORATED

P. O. Box 1700 • Tuscaloosa, Alabama 35403 -1700 USA
Phone: 205.345.2120 • FAX: 205.391.0799
Toll Free USA/Canada: 1.800.221.5497
phifer.com • ISO Registered



© SheerWeave is a registered trademark of PHIFER INCORPORATED.
© TM ECOLIBRIUM and the DOW Diamond are trademarks of
The Dow Chemical Company ("Dow") or an affiliated company of Dow.
© MICROBAN is a registered trademark of Microban Products Company.
™ UL, the UL logos and the UL mark are trademarks of UL LLC.
© PHIFER INCORPORATED V18 3033834



STYLE
4600 / 4500

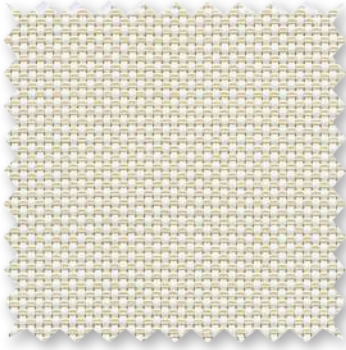
WEAVING
EXCELLENCE
WITH
INNOVATION



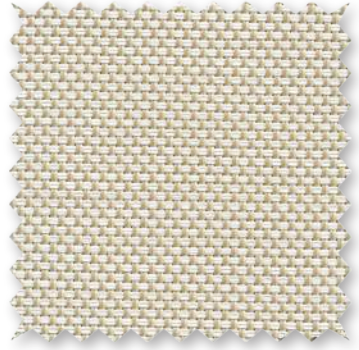
P06 **Chalk**



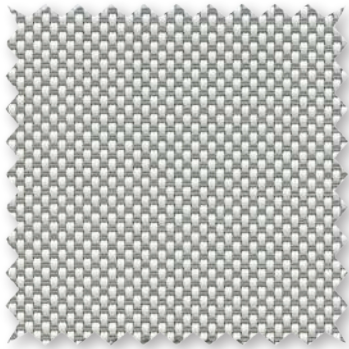
U32 **Linen**



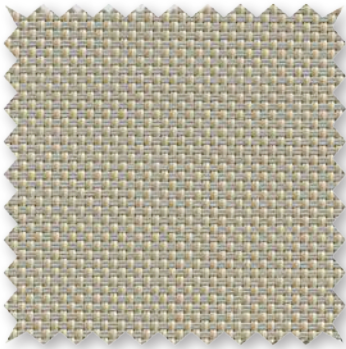
Q59 **Ecru**



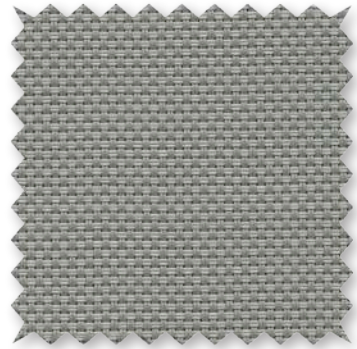
P10 **Granite**



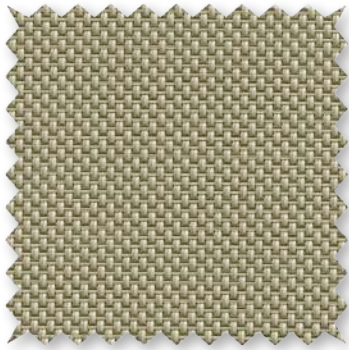
V44 **Sandstone**



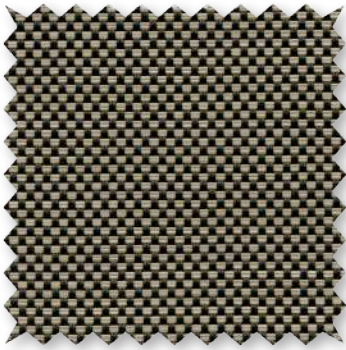
V07 **Pewter**



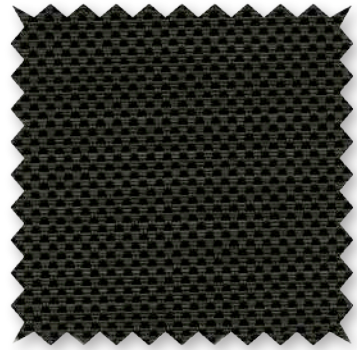
Q60 **Golden Sand**



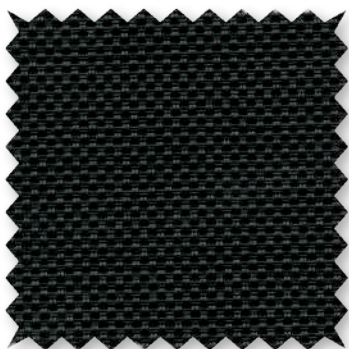
V95 **Cappuccino**



V96 **Dark Bronze**



V10 **Ebony**



*Colors may vary based on individual computer settings and should only be used for general reference.

Code	Color	SOLAR OPTICAL PROPERTIES				SHGC/G VALUE g-tot (glass & blind)	
		TS	RS	AS	TV	SINGLE 1/4 CL	INSULATING 1 HA
STYLE 4600 - 3%							
P06	Chalk	10	74	16	9	0.23	0.19
P10	Granite	5	43	52	7	0.40	0.27
Q59	Ecrú	7	58	35	8	0.32	0.23
Q60	Golden Sand	6	37	57	7	0.44	0.29
U32	Linen	8	64	28	8	0.29	0.22
V07	Pewter	5	31	64	7	0.46	0.30
V10	Ebony	3	3	94	5	0.61	0.37
V44	Sandstone	5	39	56	6	0.42	0.29
V95	Cappuccino	4	20	76	6	0.52	0.33
V96	Dark Bronze	4	5	91	7	0.60	0.37
STYLE 4500 - 5%							
P06	Chalk	12	74	14	11	0.23	0.19
P10	Granite	6	47	47	8	0.37	0.26
Q59	Ecrú	9	56	35	9	0.33	0.24
Q60	Golden Sand	7	37	56	8	0.44	0.29
U32	Linen	11	63	26	12	0.30	0.23
V07	Pewter	6	30	64	9	0.47	0.30
V10	Ebony	5	3	92	7	0.61	0.37
V44	Sandstone	8	40	52	9	0.42	0.29
V95	Cappuccino	6	18	76	9	0.53	0.34
V96	Dark Bronze	7	5	88	10	0.61	0.37



PROTECTION THAT LIVES ON
MICROBAN[®]
 Microban[®] antimicrobial protection inhibits the growth of stain-causing bacteria, mold and mildew on the shade.



PRODUCT CERTIFIED FOR
 LOW CHEMICAL EMISSIONS
 UL.COM/GG
 UL 2818



MIF Seal of Approval



TS = Solar Transmittance
 RS = Solar Reflectance
 AS = Solar Absorptance
 TV = Visual Transmittance

SHGC = Solar Heat Gain Coefficient

1/4 CL = 1/4" Clear Glass
 1 HA = 1" Heat Absorbing Glass

Fabrics Installed Internally
 Zero-Degree Profile Angle

For additional performance values, test references and technical definitions visit us at www.phifer.com.

STYLE 4600 / 4500 SPECIFICATIONS

Using advances in polyester yarn development, Styles 4600 and 4500 are thinner, lighter weight vinyl coated polyester fabrics offered in 10 decorator colors. Woven in a 2x2 basketweave, these fabrics are ideal for applications where a more opaque and non-directional fabric is needed. Style 4600/4500 can also be used in exterior shading systems.

FIRE CLASSIFICATION	California U.S. Title 19 (small scale) NFPA 101 (Class A Rating) BS 5867 Part 2 Type B Performance CAN/ULC-S 109-03 (large and small scale)	NFPA 701 TM#1 (small scale) IBC Section 803.1 (Class A Rating) NFPA 701 TM#2 (large scale)
BACTERIA AND FUNGAL RESISTANCE	ASTM E 2180 ASTM G21 GREENGUARD Mold and Bacteria Standard ASTM 6329 includes Microban antimicrobial additives	AATCC30 Part 3 ASTM D 3273
ENVIRONMENTAL CERTIFICATION	GREENGUARD GREENGUARD Gold	Certified to these standards for low chemical emissions into indoor air during product usage
LEAD FREE	RoHS/Directive 2002/95/EC ANSI/WCMA A 100.1-2007 for lead content US Consumer Product Safety Commission Section 101	REACH (EC 1907/2006) compliant
WARRANTY	10-year interior 5-year exterior	
ACOUSTICAL PERFORMANCE	NRC (Noise Reduction Coefficient) and SAA (Sound Absorption Average) tested in accordance with ASTM C423-09a	
UV PROTECTION	Seal of Approval by the Melanoma International Foundation (MIF) for effectiveness in preventing sun damage to the skin or eyes	

STYLE	4600	4500
WIDTHS	63", 98" and 126" 160 cm, 248.9 cm and 320 cm	63", 98" and 126" 160 cm, 248.9 cm and 320 cm
ROLL LENGTH	30 Linear Yards 27.4 m	30 Linear Yards 27.4 m
COMPOSITION	22% Polyester 78% Vinyl on Polyester	17% Polyester 83% Vinyl on Polyester
MESH WEIGHT	17.4 oz/yd ² 589.97 g/m ²	14.4 oz/yd ² 488.25 g/m ²
FABRIC THICKNESS	0.030 in 0.76 mm	0.024 in 0.61 mm
OPENNESS FACTOR	Approximately 3%	Approximately 5%
UV BLOCKAGE	Approximately 97%	Approximately 95%
ACOUSTICAL VALUE	NRC .20 / SAA .23	NRC .15 / SAA .17



P. O. Box 1700 • Tuscaloosa, Alabama 35403-1700 USA
 Phone: 205.345.2120 • FAX: 205.391.0799
 Toll Free USA/Canada: 1.800.221.5497
 phifer.com • ISO Registered



© SheerWeave is a registered trademark of PHIFER INCORPORATED.
 © MICROBAN is a registered trademark of Microban Products Company.
 ™ UL, the UL logos and the UL mark are trademarks of UL LLC.
 Photo courtesy of Rielamericano, Buenos Aires, Argentina.
 © PHIFER INCORPORATED V17 3033835



STYLE
4650 / 4550

WEAVING
EXCELLENCE
WITH
INNOVATION



Code	Color	SOLAR OPTICAL PROPERTIES				SHGC/G VALUE g-tot (glass & blind)	
		TS	RS	AS	TV	SINGLE 1/4 CL	INSULATING 1 HA
STYLE 4650 - 3%							
P10	Granite	6	55	39	8	0.33	0.24
P65	Linen	7	58	35	8	0.31	0.23
V45	Coal	5	47	48	7	0.37	0.26
V47	Chestnut	7	48	45	8	0.37	0.26
STYLE 4550 - 5%							
P10	Granite	7	56	37	8	0.33	0.24
P65	Linen	9	59	32	10	0.32	0.23
V45	Coal	8	48	44	9	0.37	0.26
V47	Chestnut	9	48	43	11	0.37	0.26



PROTECTION THAT LIVES ON
MICROBAN

Microban® antimicrobial protection inhibits the growth of stain-causing bacteria, mold and mildew on the shade.



PRODUCT CERTIFIED FOR
LOW CHEMICAL EMISSIONS
UL.COM/GG
UL 2818



MIF Seal of Approval



TS = Solar Transmittance
RS = Solar Reflectance
AS = Solar Absorption
TV = Visual Transmittance

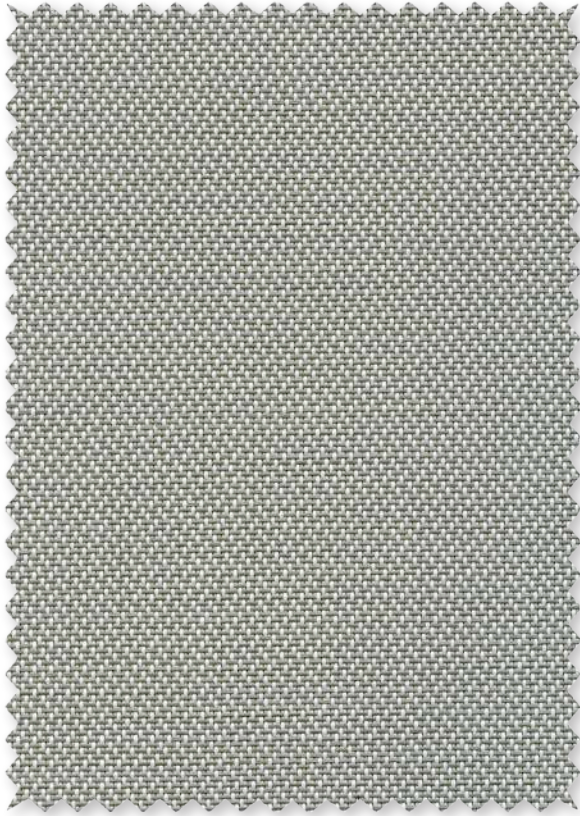
SHGC = Solar Heat Gain Coefficient

1/4 CL = 1/4" Clear Glass
1 HA = 1" Heat Absorbing Glass

Fabrics Installed Internally
Zero-Degree Profile Angle

For additional performance values, test references and technical definitions visit us at www.phifer.com.

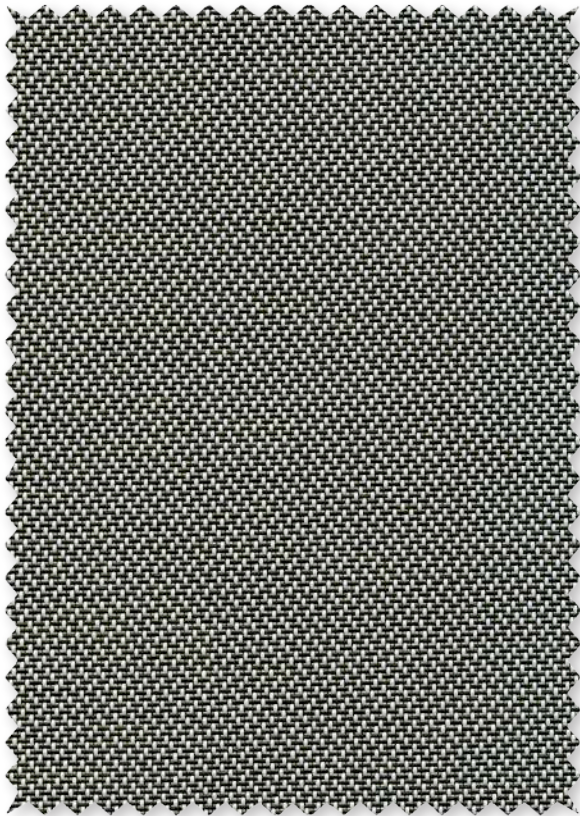
P10 Granite



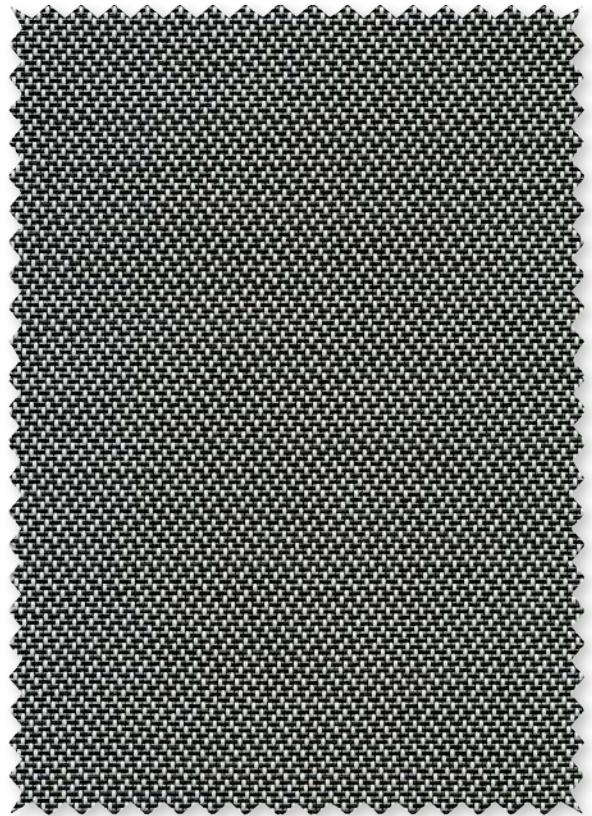
P65 Linen



V47 Chestnut



V45 Coal



STYLE 4650 / 4550 SPECIFICATIONS

Using thin polyester yarns and a unique twill weave, Styles 4650 and 4550 are easy to fabricate and offer a distinct two-sided appearance that maximizes both visibility and solar heat reduction. Style 4650/4550 can also be used in exterior roller shades.

FIRE CLASSIFICATION	California U.S. Title 19 (small scale) NFPA 101 (Class A Rating) BS 5867 Part 2 Type B Performance CAN/ULC-S 109-03 (large and small scale)	NFPA 701 TM#1 (small scale) IBC Section 803.1.1 (Class A Rating) NFPA 701 TM#2 (large scale)
BACTERIA AND FUNGAL RESISTANCE	ASTM E 2180 ASTM G21 ASTM D 3273 GREENGUARD Mold and Bacteria Standard ASTM 6329 includes Microban antimicrobial additives	AATCC30 Part 3
ENVIRONMENTAL CERTIFICATION	GREENGUARD GREENGUARD Gold	Certified to these standards for low chemical emissions into indoor air during product usage
LEAD FREE	RoHS/Directive 2002/95/EC ANSI/WCMA A 100.1-2007 for lead content US Consumer Product Safety Commission Section 101	REACH (EC 1907/2006) compliant
WARRANTY	10-year interior 5-year exterior	
ACOUSTICAL PERFORMANCE	NRC (Noise Reduction Coefficient) and SAA (Sound Absorption Average) tested in accordance with ASTM C423-09a	
UV PROTECTION	Seal of Approval by the Melanoma International Foundation (MIF) for effectiveness in preventing sun damage to the skin or eyes	

STYLE	4650	4550
WIDTHS	63" and 98" 160.0 cm and 248.9 cm	63" and 98" 160.0 cm and 248.9 cm
ROLL LENGTH	30 Linear Yards 27.4 m	30 Linear Yards 27.4 m
COMPOSITION	17% Polyester 83% Vinyl on Polyester	17% Polyester 83% Vinyl on Polyester
MESH WEIGHT	13.3 oz/yd ² 450.96 g/m ²	12.5 oz/yd ² 423.83 g/m ²
FABRIC THICKNESS	0.026 in 0.66 mm	0.025 in 0.64 mm
OPENNESS FACTOR	Approximately 3%	Approximately 5%
UV BLOCKAGE	Approximately 97%	Approximately 95%
ACOUSTICAL VALUE	NRC .15 / SAA .18	NRC .10 / SAA .11



P. O. Box 1700 • Tuscaloosa, Alabama 35403-1700 USA
 Phone: 205.345.2120 • FAX: 205.391.0799
 Toll Free USA/Canada: 1.800.221.5497
 www.phifer.com • ISO Registered



© SheerWeave is a registered trademark of PHIFER INCORPORATED.
 © MICROBAN is a registered trademark of Microban Products Company.
 ™ UL, the UL logos and the UL mark are trademarks of UL LLC.
 Photo courtesy of HUNTER DOUGLAS, South America.
 © PHIFER INCORPORATED V17 3033836



STYLE
4800

WEAVING
EXCELLENCE
WITH
INNOVATION



Code	Color	SOLAR OPTICAL PROPERTIES				SHGC/G VALUE	
		TS	RS	AS	TV	<i>SINGLE</i> 1/4 CL	<i>INSULATING</i> 1 HA
STYLE 4800 - 1%							
P06	Chalk	8	77	15	6	0.19	0.18
P07	Alabaster	10	62	28	4	0.30	0.23
P75	Pearl	4	67	29	3	0.26	0.21
Q97	Sand	1	51	48	1	0.35	0.25
Q98	Mocha	0	12	88	1	0.56	0.35
Q99	Taupe	1	41	58	0	0.40	0.28
V10	Ebony	0	3	97	0	0.60	0.37
V16	Grey	4	51	45	2	0.35	0.25
V59	Fleece	0	24	76	1	0.49	0.32
V60	Clay	0	32	68	0	0.44	0.30
V61	Mink	0	7	93	0	0.58	0.37
V62	Flint	0	8	92	0	0.57	0.36



PROTECTION THAT LIVES ON
MICROBAN

Microban® antimicrobial protection inhibits the growth of stain-causing bacteria, mold and mildew on the shade.



PRODUCT CERTIFIED FOR
 LOW CHEMICAL EMISSIONS
 UL.COM/GG
 UL 2818



MIF Seal of Approval



TS = Solar Transmittance
 RS = Solar Reflectance
 AS = Solar Absorptance
 TV = Visual Transmittance

SHGC = Solar Heat Gain Coefficient

1/4 CL = 1/4" Clear Glass
 1 HA = 1" Heat Absorbing Glass

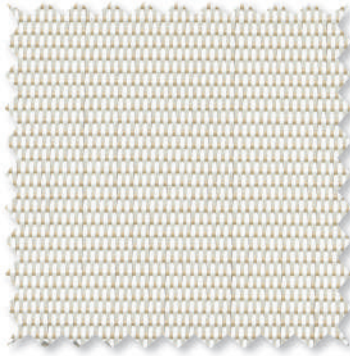
Fabrics Installed Internally
 Zero-Degree Profile Angle

For additional performance values, test references and technical definitions visit us at www.phifer.com.

P06 Chalk



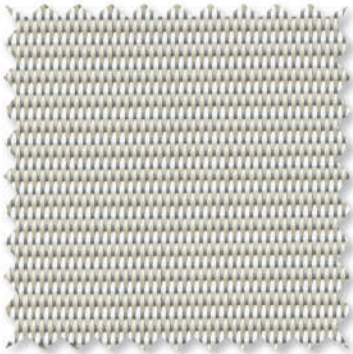
P75 Pearl



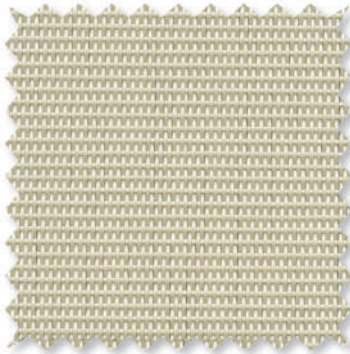
P07 Alabaster



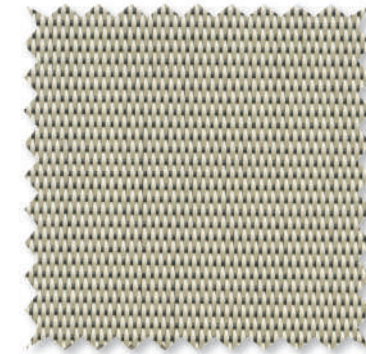
V16 Grey



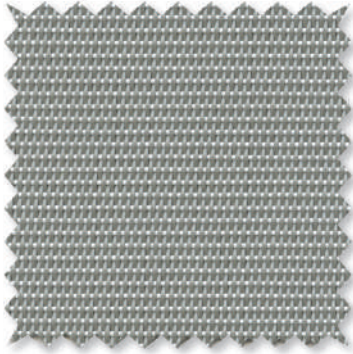
Q97 Sand



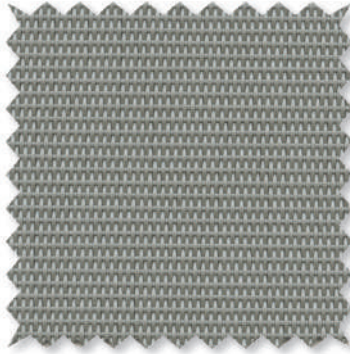
Q99 Taupe



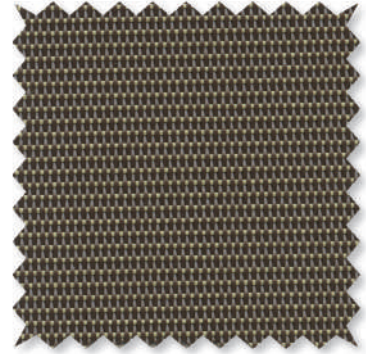
V60 Clay



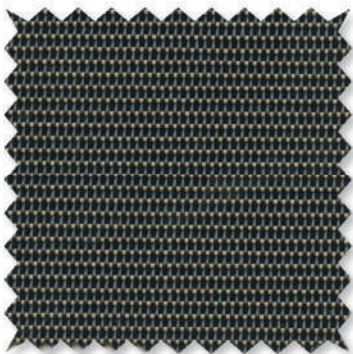
V59 Fleece



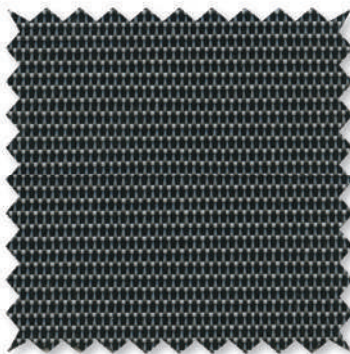
Q98 Mocha



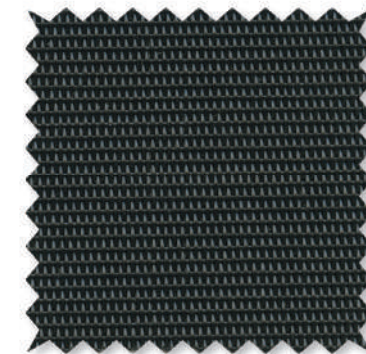
V61 Mink



V62 Flint



V10 Ebony



*Colors may vary based on individual computer settings and should only be used for general reference.

STYLE 4800 SPECIFICATIONS

Designed with privacy in mind, Style 4800 is woven in a dense plain weave to limit directional visibility while allowing natural light to enter the room. Woven from vinyl-coated polyester yarns Style 4800 is durable, easy to maintain and high performing with a robust construction that makes it ideal for heavy traffic areas and public spaces. Style 4800 can also be used in exterior shading systems.

FIRE CLASSIFICATION	California U.S. Title 19 (small scale)	NFPA 701 TM#1 (small scale)		
	NFPA 101 (Class A Rating)	IBC Section 803.1.1 (Class A Rating)		
	BS 5867 Part 2 Type B Performance	NFPA 701 TM#2 (large scale)		
	CAN/ULC-S 109-03 (large and small scale)	CAN/CGSB2-4.162-M80		
BACTERIA AND FUNGAL RESISTANCE	ASTM E 2180	ASTM G21	AATCC30 Part 3	ASTM D 3273
	GREENGUARD Mold and Bacteria Standard ASTM 6329 includes Microban antimicrobial additives			
ENVIRONMENTAL CERTIFICATION	GREENGUARD	GREENGUARD Gold		
	Certified to these standards for low chemical emissions into indoor air during product usage			
LEAD FREE	RoHS/Directive 2002/95/EC	REACH (EC 1907/2006) compliant		
	ANSI/WCMA A 100.1-2007 for lead content			
	US Consumer Product Safety Commission Section 101			
WARRANTY	10-year interior	5-year exterior		
ACOUSTICAL PERFORMANCE	NRC (Noise Reduction Coefficient) and SAA (Sound Absorption Average) tested in accordance with			
	ASTM C423-09a			
UV PROTECTION	Seal of Approval by the Melanoma International Foundation (MIF) for effectiveness in preventing sun damage to the skin or eyes			

STYLE 4800

WIDTHS	63", 98" and 126" 160 cm, 248.9 cm and 320 cm
ROLL LENGTH	30 Linear Yards 27.4 m
COMPOSITION	24% Polyester 76% Vinyl on Polyester
MESH WEIGHT	18.5 oz/yd ² 627 g/m ²
FABRIC THICKNESS	0.036 in 0.91 mm
OPENNESS FACTOR	Approximately 1%
UV BLOCKAGE	Approximately 99%
ACOUSTICAL VALUE	NRC .30 / SAA .31

PHIFER
INCORPORATED

P. O. Box 1700 • Tuscaloosa, Alabama 35403-1700 USA
Phone: 205.345.2120 • FAX: 205.391.0799
Toll Free USA/Canada: 1.800.221.5497
phifer.com • ISO Registered



© SheerWeave is a registered trademark of PHIFER INCORPORATED.
© MICROBAN is a registered trademark of Microban Products Company.
™ UL, the UL logos and the UL mark are trademarks of UL LLC.
Photo courtesy of Draper INC., Spiceland, Indiana, USA.
© PHIFER INCORPORATED V18 3033839



STYLE
5000

WEAVING
EXCELLENCE
WITH
INNOVATION



Code	Color	SOLAR OPTICAL PROPERTIES				SHGC/G VALUE	
		TS	RS	AS	TV	SINGLE 1/4 CL	INSULATING 1 HA
STYLE 5000							
P60	Bamboo/Birch	21	59	20	18	0.34	0.24
Q43	Marble/Sand	9	48	43	9	0.37	0.26
Q46	Bamboo/Wheat	19	29	52	16	0.50	0.32
Q47	Moire/Mocha	17	23	60	15	0.53	0.33
Q49	Rattan/Umber	18	27	55	12	0.51	0.32
Q50	Bark/Tiger Oak	17	24	59	16	0.52	0.33
Q51	Wicker/Mushroom	15	24	61	11	0.52	0.33
Q53	Honeycomb/ Brown Sugar	19	26	55	15	0.52	0.33
Q61	Bark/Ash	8	29	63	11	0.48	0.31
Q62	Bark/Pewter	11	35	54	13	0.45	0.30
Q63	Linen/Pearl	36	50	14	33	0.42	0.28
Q64	Linen/Taupe	22	39	39	20	0.45	0.30
Q65	Linen/Clay	23	32	45	23	0.50	0.31
Q66	Metro/Platinum	29	31	40	28	0.51	0.32
Q94	Tweed/Oatmeal	11	34	55	10	0.46	0.30
Q95	Tweed/Buckeye	9	28	63	9	0.49	0.31
Q96	Thatch/Wheatgrass	11	26	63	11	0.50	0.32
R11	Linen/Cranberry	7	17	76	8	0.54	0.34
R12	Linen/Cinnamon	6	20	74	8	0.52	0.33
R85	Jute/Parchment	13	70	17	10	0.26	0.21
R86	Jute/Flax	30	56	14	27	0.37	0.26
R87	Jute/Latte	24	50	26	21	0.40	0.27
R88	Jute/Coffee	5	15	80	5	0.55	0.35
R89	Chenille/Marshmallow	16	67	17	15	0.29	0.22
R90	Chenille/Pearl	32	53	15	29	0.40	0.27
R91	Chenille/Honey	26	47	27	24	0.42	0.28
R92	Chenille/Driftwood	12	26	62	14	0.50	0.32
R93	Wicker/Straw	14	48	38	13	0.39	0.27
R95	Bark/Sienna	6	16	78	6	0.55	0.34
U10	Linen/Topaz	11	24	65	10	0.51	0.33
U11	Linen/Burlap	10	30	60	9	0.48	0.31
U12	Linen/Cream	22	46	31	21	0.42	0.28
U16	Crepe/ Toasted Coconut	24	40	36	25	0.45	0.31
U24	Seaglass/Silver	33	27	40	37	0.54	0.34
U28	Seaglass/Chardonnay	40	43	17	41	0.47	0.30
U29	Seaglass/Crystal	44	49	7	45	0.44	0.29
V88	Linen/Fig	6	15	79	8	0.55	0.35

Original artwork and original designs are protected under U.S. copyright laws. The samples attached to this notice fall under the federal statute and are therefore protected. Slight changes in the color combinations or weave pattern do not remove your legal obligation. If you would like further information regarding the copyright status of a pattern, please call the market manager representative at 1/800-221-5497 and refer to the style number.

PROTECTION THAT LIVES ON
MICROBAN

Microban® antimicrobial protection inhibits the growth of stain-causing bacteria, mold and mildew on the shade.



PRODUCT CERTIFIED FOR
LOW CHEMICAL EMISSIONS
UL.COM/GG
UL 2818



MIF Seal of Approval



TS = Solar Transmittance
RS = Solar Reflectance
AS = Solar Absorptance
TV = Visual Transmittance

SHGC = Solar Heat Gain Coefficient

1/4 CL = 1/4" Clear Glass
1 HA = 1" Heat Absorbing Glass

Fabrics Installed Internally
Zero-Degree Profile Angle

For additional performance values, test references and technical definitions visit us at www.phifer.com.



U12
Linen/
Cream

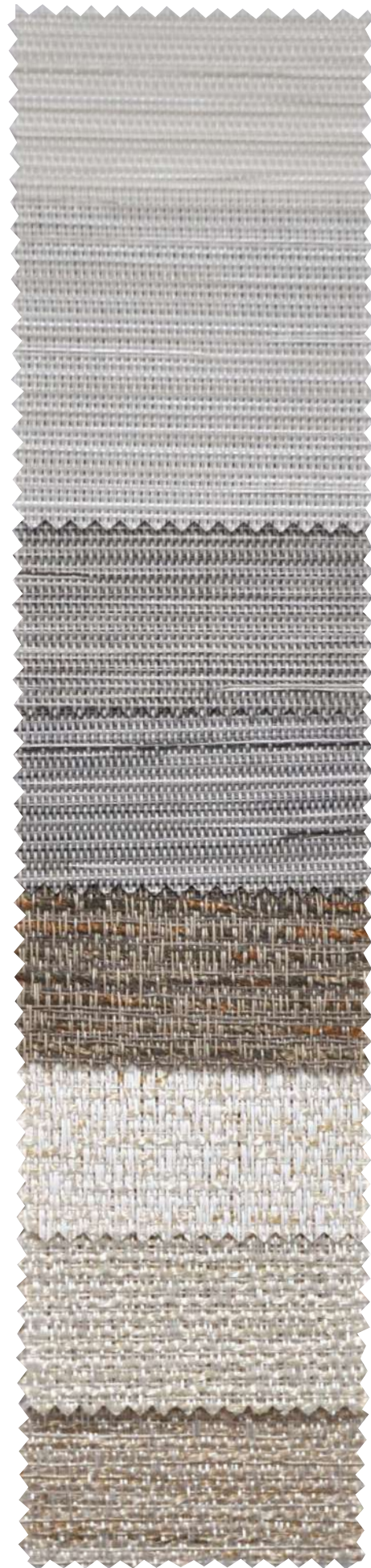
U11
Linen/
Burlap

U10
Linen/
Topaz

R12
Linen/
Cinnamon

R11
Linen/
Cranberry

V88
Linen/
Fig



Q63
Linen / Pearl

Q64
Linen / Taupe

Q65
Linen / Clay

R92
Chenille /
Driftwood

R89
Chenille /
Marshmallow

R90
Chenille /
Pearl

R91
Chenille /
Honey



R85
Jute /
Parchment

R86
Jute / Flax

R87
Jute / Latte

R88
Jute / Coffee

P60
Bamboo /
Birch

Q46
Bamboo /
Wheat

U16
Crepe /
Toasted
Coconut



Q61
Bark / Ash

Q50
Bark / Tiger
Oak

R95
Bark / Sienna

Q62
Bark / Pewter

U29
Seaglass /
Crystal

U28
Seaglass /
Chardonnay

U24
Seaglass /
Silver



Q66
Metro /
Platinum

Q43
Marble /
Sand

Q53
Honeycomb /
Brown Sugar

Q96
Thatch /
Wheatgrass

Q49
Rattan /
Umber

Q47
Moire /
Mocha



Q95
Tweed /
Buckeye

Q94
Tweed /
Oatmeal

R93
Wicker /
Straw

Q51
Wicker /
Mushroom

P60 Bamboo/Birch

COMPOSITION: 28% Polyester, 72%

Vinyl on Polyester

MESH WEIGHT: 14.5 oz/yd²
(492 g/m²)

FABRIC THICKNESS: 0.038 in.
(0.97 mm)

OPENNESS FACTOR: Approx. 10%

UV BLOCKAGE: Approx. 90%

FIRE CLASSIFICATION: California US Title 19 (small scale), NFPA 701 TM#1 (small and large scale), BS 5867 Part 2 Type B Performance, NFPA 101 (Class A Rating), and IBC Section 803.1.1 (Class A Rating)

Q43 Marble/Sand

COMPOSITION: 28% Polyester, 72%

Vinyl on Polyester

MESH WEIGHT: 14.5 oz/yd²
(492 g/m²)

FABRIC THICKNESS: 0.038 in.
(0.97 mm)

OPENNESS FACTOR: Approx. 5%

UV BLOCKAGE: Approx. 95%

FIRE CLASSIFICATION: California US Title 19 (small scale), NFPA 701 TM#1 (small and large scale), BS 5867 Part 2 Type B Performance, NFPA 101 (Class A Rating), and IBC Section 803.1.1 (Class A Rating)

Q46 Bamboo/Wheat

COMPOSITION: 27% Polyester, 68%

Vinyl on Polyester, 5% Olefin

MESH WEIGHT: 14.3 oz/yd²
(485 g/m²)

FABRIC THICKNESS: 0.044 in.
(1.12 mm)

OPENNESS FACTOR: Approx. 7%

UV BLOCKAGE: Approx. 93%

FIRE CLASSIFICATION: California Technical Bulletin 117 Sect. E. Part 1, NFPA 101 (Class A Rating), and IBC Section 803.1.1 (Class A Rating)

Q47 Moire/Mocha

COMPOSITION: 26% Polyester, 68%

Vinyl on Polyester, 6% Olefin

MESH WEIGHT: 12.3 oz/yd²
(417 g/m²)

FABRIC THICKNESS: 0.035 in.
(0.89 mm)

OPENNESS FACTOR: Approx. 7%

UV BLOCKAGE: Approx. 93%

FIRE CLASSIFICATION: California Technical Bulletin 117 Sect. E. Part 1, NFPA 101 (Class A Rating), and IBC Section 803.1.1 (Class A Rating)

Q49 Rattan/Umber

COMPOSITION: 27% Polyester, 68%

Vinyl on Polyester, 5% Olefin

MESH WEIGHT: 14.3 oz/yd²
(485 g/m²)

FABRIC THICKNESS: 0.044 in.
(1.12 mm)

OPENNESS FACTOR: Approx. 7%

UV BLOCKAGE: Approx. 93%

FIRE CLASSIFICATION: California Technical Bulletin 117 Sect. E. Part 1, NFPA 101 (Class A Rating), and IBC Section 803.1.1 (Class A Rating)

Q50 Bark/Tiger Oak

Q51 Wicker/Mushroom

COMPOSITION: 27% Polyester, 68%

Vinyl on Polyester, 5% Olefin

MESH WEIGHT: 14.3 oz/yd²
(485 g/m²)

FABRIC THICKNESS: 0.044 in.
(1.12 mm)

OPENNESS FACTOR: Approx. 5%

UV BLOCKAGE: Approx. 95%

FIRE CLASSIFICATION: California Technical Bulletin 117 Sect. E. Part 1, NFPA 101 (Class A Rating), and IBC Section 803.1.1 (Class A Rating)

Q53 Honeycomb/Brown Sugar

COMPOSITION: 26% Polyester, 67%

Vinyl on Polyester, 7% Olefin

MESH WEIGHT: 13.0 oz/yd²
(441 g/m²)

FABRIC THICKNESS: 0.037 in.
(0.94 mm)

OPENNESS FACTOR: Approx. 10%

UV BLOCKAGE: Approx. 90%

FIRE CLASSIFICATION: California Technical Bulletin 117 Sect. E. Part 1, NFPA 101 (Class A Rating), and IBC Section 803.1.1 (Class A Rating)

Q61 Bark/Ash

COMPOSITION: 72% Vinyl on

Polyester, 28% Polyester

MESH WEIGHT: 16.1 oz/yd²
(546 g/m²)

FABRIC THICKNESS: 0.043 in.
(1.09 mm)

OPENNESS FACTOR: Approx. 5%

UV BLOCKAGE: Approx. 95%

FIRE CLASSIFICATION: California Technical Bulletin 117 Sect. E. Part 1, NFPA 701 TM#1 (small scale), NFPA 101 (Class A Rating), and IBC Section 803.1.1 (Class A Rating)

Q62 Bark/Pewter

COMPOSITION: 72% Vinyl on

Polyester, 28% Polyester

MESH WEIGHT: 15.3 oz/yd² (519 g/m²)

FABRIC THICKNESS: 0.042 in.
(1.07 mm)

OPENNESS FACTOR: Approx. 5%

UV BLOCKAGE: Approx. 95%

FIRE CLASSIFICATION: California Technical Bulletin 117 Sect. E. Part 1, NFPA 701 TM#1 (small scale), NFPA 101 (Class A Rating), and IBC Section 803.1.1 (Class A Rating)

Q63 Linen/Pearl

COMPOSITION: 72% Vinyl on

Polyester, 28% Polyester

MESH WEIGHT: 15.4 oz/yd²
(522 g/m²)

FABRIC THICKNESS: 0.035 in.
(0.89 mm)

OPENNESS FACTOR: Approx. 5%

UV BLOCKAGE: Approx. 95%

FIRE CLASSIFICATION: California Technical Bulletin 117 Sect. E. Part 1, NFPA 701 TM#1 (small scale), NFPA 101 (Class A Rating), and IBC Section 803.1.1 (Class A Rating)

Q64 Linen/Taupe

COMPOSITION: 72% Vinyl on

Polyester, 28% Polyester

MESH WEIGHT: 16.3 oz/yd²
(553 g/m²)

FABRIC THICKNESS: 0.035 in.
(0.89 mm)

OPENNESS FACTOR: Approx. 5%

UV BLOCKAGE: Approx. 95%

FIRE CLASSIFICATION: California Technical Bulletin 117 Sect. E. Part 1, NFPA 701 TM#1 (small scale), NFPA 101 (Class A Rating), and IBC Section 803.1.1 (Class A Rating)

Q65 Linen/Clay

COMPOSITION: 72% Vinyl on

Polyester, 28% Polyester

MESH WEIGHT: 15.5 oz/yd² (526 g/m²)

FABRIC THICKNESS: 0.035 in.
(0.89 mm)

OPENNESS FACTOR: Approx. 7%

UV BLOCKAGE: Approx. 93%

FIRE CLASSIFICATION: California Technical Bulletin 117 Sect. E. Part 1, NFPA 701 TM#1 (small scale), NFPA 101 (Class A Rating), and IBC Section 803.1.1 (Class A Rating)

Q66 Metro/Platinum

COMPOSITION: 67% Vinyl on

Polyester, 26% Polyester, 7% Olefin

MESH WEIGHT: 12.5 oz/yd²
(424 g/m²)

FABRIC THICKNESS: 0.030 in.
(0.76 mm)

OPENNESS FACTOR: Approx. 5%

UV BLOCKAGE: Approx. 95%

FIRE CLASSIFICATION: California Technical Bulletin 117 Sect. E. Part 1, NFPA 101 (Class A Rating), and IBC Section 803.1.1 (Class A Rating)

Q94 Tweed/Oatmeal

COMPOSITION: 36% Polyester, 64%

Vinyl on Polyester

MESH WEIGHT: 13.7 oz/yd²
(465 g/m²)

FABRIC THICKNESS: 0.036 in.
(0.91 mm)

OPENNESS FACTOR: Approx. 5%

UV BLOCKAGE: Approx. 95%

FIRE CLASSIFICATION: California Technical Bulletin 117 Sect. E. Part 1, NFPA 101 (Class A Rating), and IBC Section 803.1.1 (Class A Rating)

Q95 Tweed/Buckeye

COMPOSITION: 37% Polyester, 63%

Vinyl on Polyester

MESH WEIGHT: 13.6 oz/yd²
(461 g/m²)

FABRIC THICKNESS: 0.038 in.
(0.97 mm)

OPENNESS FACTOR: Approx. 5%

UV BLOCKAGE: Approx. 95%

FIRE CLASSIFICATION: California Technical Bulletin 117 Sect. E. Part 1, NFPA 101 (Class A Rating), and IBC Section 803.1.1 (Class A Rating)

Q96 Thatch/Wheatgrass

COMPOSITION: 27% Polyester, 68%

Vinyl on Polyester, 5% Olefin

MESH WEIGHT: 13.5 oz/yd²
(458 g/m²)

FABRIC THICKNESS: 0.037 in.
(.094 mm)

OPENNESS FACTOR: Approx. 7%

UV BLOCKAGE: Approx. 93%

FIRE CLASSIFICATION: California Technical Bulletin 117 Sect. E. Part 1, NFPA 101 (Class A Rating), and IBC Section 803.1.1 (Class A Rating)

R11 Linen/Cranberry

R12 Linen/Cinnamon

COMPOSITION: 45% Polyester, 55% Vinyl on Polyester

MESH WEIGHT: 14.1 oz/yd²
(478 g/m²)

FABRIC THICKNESS: 0.40 in.
(1.02 mm)

OPENNESS FACTOR: Approx. 3%

UV BLOCKAGE: Approx. 97%

FIRE CLASSIFICATION: California Technical Bulletin 117 Sect. E. Part 1, NFPA 101 (Class A Rating), and IBC Section 803.1.1 (Class A Rating)

R85 Jute/Parchment

COMPOSITION: 49% Polyester, 51% Vinyl on Polyester

MESH WEIGHT: 17.2 oz/yd²
(584 g/m²)

FABRIC THICKNESS: 0.040 in.
(1.02 mm)

OPENNESS FACTOR: Approx. 1%

UV BLOCKAGE: Approx. 99%

FIRE CLASSIFICATION: California Technical Bulletin 117 Sect. E. Part 1, NFPA 101 (Class A Rating), ASTM E 84 (Class 1) and IBC Section 803.1.1 (Class A Rating)

R86 Jute/Flax

COMPOSITION: 49% Polyester, 51% Vinyl on Polyester

MESH WEIGHT: 16.70 oz/yd²
(566 g/m²)

FABRIC THICKNESS: 0.039 in.
(0.99 mm)

OPENNESS FACTOR: Approx. 1%

UV BLOCKAGE: Approx. 99%

FIRE CLASSIFICATION: California Technical Bulletin 117 Sect. E. Part 1, NFPA 101 (Class A Rating), ASTM E 84 (Class 1) and IBC Section 803.1.1 (Class A Rating)

R87 Jute/Latte

COMPOSITION: 49% Polyester, 51% Vinyl on Polyester

MESH WEIGHT: 16.62 oz/yd²
(564 g/m²)

FABRIC THICKNESS: .039 in.
(0.99 mm)

OPENNESS FACTOR: Approx. 1%

UV BLOCKAGE: Approx. 99%

FIRE CLASSIFICATION: California Technical Bulletin 117 Sect. E. Part 1, NFPA 101 (Class A Rating), and IBC Section 803.1.1 (Class A Rating)

R88 Jute/Coffee

COMPOSITION: 49% Polyester, 51% Vinyl on Polyester

MESH WEIGHT: 16.88 oz/yd²
(572 g/m²)

FABRIC THICKNESS: 0.039 in.
(0.99 mm)

OPENNESS FACTOR: Approx. 1%

UV BLOCKAGE: Approx. 99%

FIRE CLASSIFICATION: California Technical Bulletin 117 Sect. E. Part 1, NFPA 101 (Class A Rating), and IBC Section 803.1.1 (Class A Rating)

R89 Chenille/Marshmallow

COMPOSITION: 49% Polyester, 51% Vinyl on Polyester

MESH WEIGHT: 16.43 oz/yd²
(557 g/m²)

FABRIC THICKNESS: 0.048 in.
(1.22 mm)

OPENNESS FACTOR: Approx. 3%

UV BLOCKAGE: Approx. 97%

FIRE CLASSIFICATION: California Technical Bulletin 117 Sect. E. Part 1, NFPA 701 TM#1 (small scale), NFPA 101 (Class A Rating), and IBC Section 803.1.1 (Class A Rating)

R90 Chenille/Pearl

COMPOSITION: 49% Polyester, 51% Vinyl on Polyester

MESH WEIGHT: 15.6 oz/yd²
(529 g/m²)

FABRIC THICKNESS: 0.044 in.
(1.12 mm)

OPENNESS FACTOR: Approx. 3%

UV BLOCKAGE: Approx. 97%

FIRE CLASSIFICATION: California Technical Bulletin 117 Sect. E. Part 1, NFPA 701 TM#1 (small scale), NFPA 101 (Class A Rating), and IBC Section 803.1.1 (Class A Rating)

R91 Chenille/Honey

COMPOSITION: 49% Polyester, 51% Vinyl on Polyester

MESH WEIGHT: 16.34 oz/yd²
(554 g/m²)

FABRIC THICKNESS: 0.045 in.
(1.14 mm)

OPENNESS FACTOR: Approx. 3%

UV BLOCKAGE: Approx. 97%

FIRE CLASSIFICATION: California Technical Bulletin 117 Sect. E. Part 1, NFPA 101 (Class A Rating), and IBC Section 803.1.1 (Class A Rating)

R92 Chenille/Driftwood

COMPOSITION: 49% Polyester, 51% Vinyl on Polyester

MESH WEIGHT: 15.0 oz/yd²
(509 g/m²)

FABRIC THICKNESS: 0.047 in.
(1.19 mm)

OPENNESS FACTOR: Approx. 5%

UV BLOCKAGE: Approx. 95%

FIRE CLASSIFICATION: California Technical Bulletin 117 Sect. E. Part 1, NFPA 101 (Class A Rating), and IBC Section 803.1.1 (Class A Rating)

R93 Wicker/Straw

COMPOSITION: 49% Polyester, 51% Vinyl on Polyester

MESH WEIGHT: 15.68 oz/yd²
(532 g/m²)

FABRIC THICKNESS: 0.045 in.
(1.14 mm)

OPENNESS FACTOR: Approx. 3%

UV BLOCKAGE: Approx. 97%

FIRE CLASSIFICATION: California Technical Bulletin 117 Sect. E. Part 1, NFPA 101 (Class A Rating), and IBC Section 803.1.1 (Class A Rating)

R95 Bark/Sienna

COMPOSITION: 43% Polyester, 57% Vinyl on Polyester

MESH WEIGHT: 16.26 oz/yd²
(551 g/m²)

FABRIC THICKNESS: 0.054 in.
(1.37 mm)

OPENNESS FACTOR: Approx. 3%

UV BLOCKAGE: Approx. 97%

FIRE CLASSIFICATION: California

Technical Bulletin 117 Sect. E. Part 1, NFPA 101 (Class A Rating), and IBC Section 803.1.1 (Class A Rating)

U10 Linen/Topaz

V88 Linen/Fig

COMPOSITION: 45% Polyester, 55% Vinyl on Polyester

MESH WEIGHT: 14.1 oz/yd²
(478 g/m²)

FABRIC THICKNESS: 0.040 in.
(1.02 mm)

OPENNESS FACTOR: Approx. 3%

UV BLOCKAGE: Approx. 97%

FIRE CLASSIFICATION: California Technical Bulletin 117 Sect. E. Part 1, NFPA 101 (Class A Rating), and IBC Section 803.1.1 (Class A Rating)

U11 Linen/Burlap

COMPOSITION: 43% Polyester, 57% Vinyl on Polyester

MESH WEIGHT: 16.1 oz/yd²
(546 g/m²)

FABRIC THICKNESS: 0.046 in.
(1.17 mm)

OPENNESS FACTOR: Approx. 3%

UV BLOCKAGE: Approx. 97%

FIRE CLASSIFICATION: California Technical Bulletin 117 Sect. E. Part 1, NFPA 101 (Class A Rating), and IBC Section 803.1.1 (Class A Rating)

U12 Linen/Cream

COMPOSITION: 43% Polyester, 57% Vinyl on Polyester

MESH WEIGHT: 16.1 oz/yd²
(546 g/m²)

FABRIC THICKNESS: 0.052 in.
(1.32 mm)

OPENNESS FACTOR: Approx. 3%

UV BLOCKAGE: Approx. 97%

FIRE CLASSIFICATION: California Technical Bulletin 117 Sect. E. Part 1, NFPA 101 (Class A Rating), and IBC Section 803.1.1 (Class A Rating)

U16 Crepe/Toasted Coconut

COMPOSITION: 28% Polyester, 72% Vinyl on Polyester

MESH WEIGHT: 14.3 oz/yd²
(485 g/m²)

FABRIC THICKNESS: 0.039 in.
(0.99 mm)

OPENNESS FACTOR: Approx. 10%

UV BLOCKAGE: Approx. 90%

FIRE CLASSIFICATION: California Technical Bulletin 117 Sect. E. Part 1, NFPA 701 TM#1 (small scale), NFPA 101 (Class A Rating), and IBC Section 803.1.1 (Class A Rating)

U24 Seaglass/Silver

U28 Seaglass/Chardonnay

U29 Seaglass/Crystal

COMPOSITION: 28% Polyester, 72% Vinyl on Polyester

MESH WEIGHT: 14.3 oz/yd²
(485 g/m²)

FABRIC THICKNESS: 0.039 in.
(0.99 mm)

OPENNESS FACTOR: Approx. 10%

UV BLOCKAGE: Approx. 90%

FIRE CLASSIFICATION: California Technical Bulletin 117 Sect. E. Part 1, NFPA 701 TM#1 (small scale), NFPA 101 (Class A Rating), and IBC Section 803.1.1 (Class A Rating)

STYLE 5000 SPECIFICATIONS

SheerWeave Style 5000 features fabrics that combine textured yarns with traditional patterns. With a color palette of hushed naturals and rich earth tones, this collection offers a range of classic options designed to suit any style of decor or personal preference. Style 5000 can also be used in exterior roller shades.

FIRE CLASSIFICATION

See individual pattern certifications

Fire classifications are subject to change. Please go to phifer.com for the most current information.

BACTERIA AND FUNGAL RESISTANCE

ASTM E 2180 ASTM G21
Includes Microban antimicrobial additives

ENVIRONMENTAL CERTIFICATION

GREENGUARD GREENGUARD Gold
Certified to these standards for low chemical emissions into indoor air during product usage

LEAD FREE

RoHS/Directive 2002/95/EC REACH (EC 1907/2006) compliant
ANSI/WCMA A 100.1-2007 for lead content
US Consumer Product Safety Commission Section 101

WARRANTY

10-year interior 5-year exterior

ACOUSTICAL PERFORMANCE

NRC (Noise Reduction Coefficient) and SAA (Sound Absorption Average) tested in accordance with ASTM C423-09a

UV PROTECTION

Seal of Approval by the Melanoma International Foundation (MIF) for effectiveness in preventing sun damage to the skin or eyes

STYLE 5000

WIDTHS

74" and 98"
187.96 cm and 248.9 cm

ROLL LENGTH

30 Linear Yards
27.4 m

ACOUSTICAL VALUE

NRC .15 / SAA .16

For additional specification information, please see individual pattern listings.



P. O. Box 1700 • Tuscaloosa, Alabama 35403-1700 USA
Phone: 205.345.2120 • FAX: 205.391.0799
Toll Free USA/Canada: 1.800.221.5497
phifer.com • ISO Registered



© SheerWeave is a registered trademark of PHIFER INCORPORATED.
© MICROBAN is a registered trademark of Microban Products Company.
™ UL, the UL logos and the UL mark are trademarks of UL LLC.
Cover photo courtesy of WINDOW INTERIORS, Altamonte Springs, Florida, USA.
© PHIFER INCORPORATED V18B 3033841



SHEERWEAVE

BY PHIFER

STYLE

7000

BLACKOUT FABRIC

WEAVING
EXCELLENCE
WITH
INNOVATION



Code	Color	SOLAR OPTICAL PROPERTIES				SHGC/G VALUE	
		TS	RS	AS	TV	<i>SINGLE</i> 1/4 CL	<i>INSULATING</i> 1 HA
STYLE 7000 - BLACKOUT							
P62	White	0	64	36	0	0.27	0.21
V40	Onyx	0	64	36	0	0.27	0.21



PRODUCT CERTIFIED FOR
LOW CHEMICAL EMISSIONS
UL.COM/GG
UL 2818



MIF Seal of Approval



TS = Solar Transmittance
RS = Solar Reflectance
AS = Solar Absorptance
TV = Visual Transmittance

SHGC = Solar Heat Gain Coefficient

1/4 CL = 1/4" Clear Glass
1 HA = 1" Heat Absorbing Glass

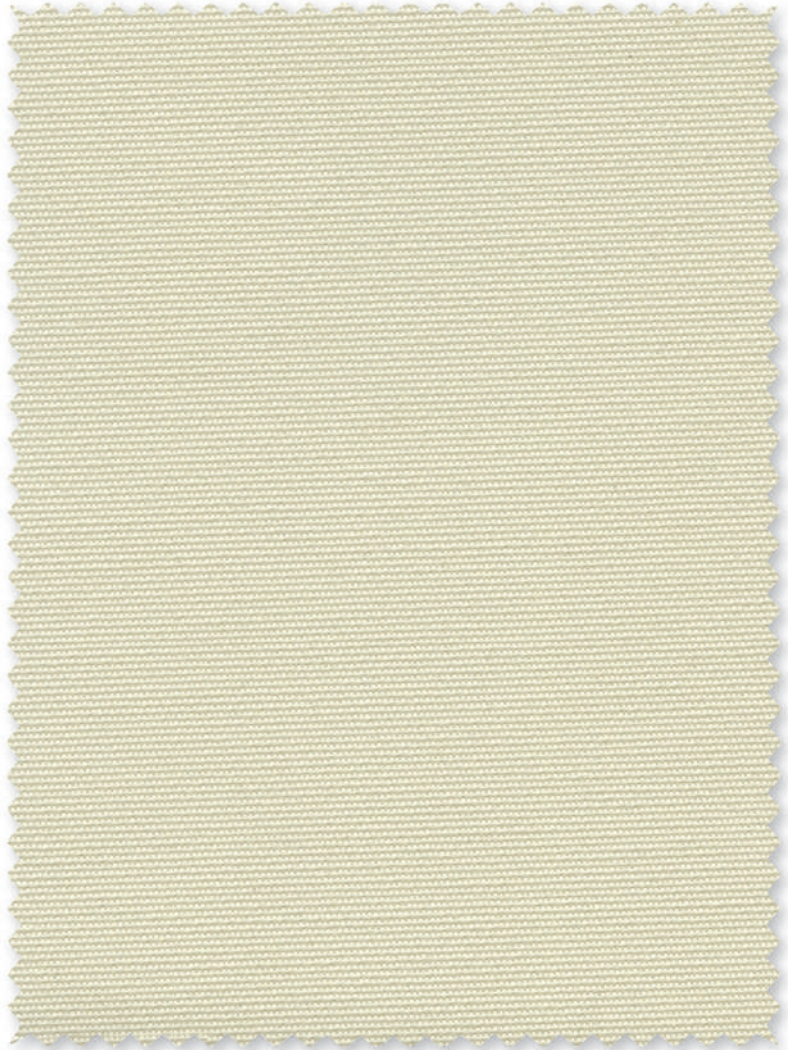
Fabrics Installed Internally
Zero-Degree Profile Angle

For additional performance values, test references and technical definitions visit us at www.phifer.com.

P62 **White**



P64 **Sand**



P63 **Birch**



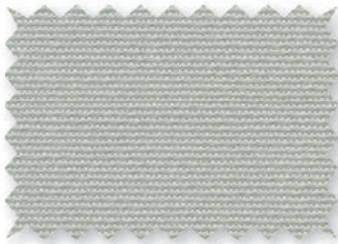
Q57 **Wheat**



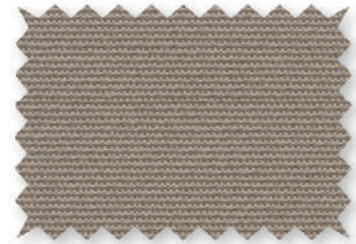
U67 **Canvas**



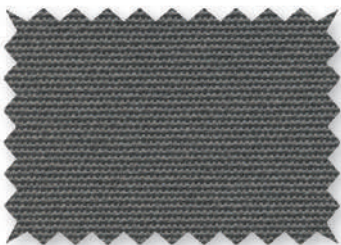
V41 **Canyon**



Q58 **Mushroom**



V39 **Graphite**



U69 **Cocoa**



V40 **Onyx**



*Colors may vary based on individual computer settings and should only be used for general reference.

STYLE 7000 SPECIFICATIONS

Style 7000 is uniquely designed to provide total light blockage when complete room darkening is needed. With a broad range of decorator colors, the look and feel of rich cloth and a PVC-free composition, Style 7000 will enhance the beauty and function of both commercial and residential spaces. All Style 7000 colors have an off-white backing.

FIRE CLASSIFICATION	California U.S. Title 19 (small scale)	NFPA 701 TM#1 (small scale)
	BS 5867 Part 2 Type B Performance	CAN/ULC-S 109 (large and small scale)
	IBC Section 803.1.1 (Class A Rating)	CAN/CGSB2-4.162-M80
	NFPA 101 (Class A Rating)	

Fire classifications are subject to change. Please go to phifer.com for the most current information.

BACTERIA AND FUNGAL RESISTANCE	ASTM G21-96	AATCC 174-1998 Part II and III
---------------------------------------	-------------	--------------------------------

ENVIRONMENTAL CERTIFICATION	GREENGUARD	GREENGUARD Gold
	Certified to these standards for low chemical emissions into indoor air during product usage	

LEAD FREE	RoHS/Directive 2002/95/EC
	ANSI/WCMA A 100.1-2007 for lead content
	US Consumer Product Safety Commission Section 101

WARRANTY	5-year interior
-----------------	-----------------

ACOUSTICAL PERFORMANCE	NRC (Noise Reduction Coefficient) and SAA (Sound Absorption Average) tested in accordance with ASTM C423-09a
-------------------------------	--

UV PROTECTION	Seal of Approval by the Melanoma International Foundation (MIF) for effectiveness in preventing sun damage to the skin or eyes
----------------------	--

CLEANING INSTRUCTIONS	Fabric should be regularly dusted/vacuumed as appropriate. If commercial spot cleaners are used, they must first be tested and allowed to dry on an inconspicuous area to ensure compatibility.
------------------------------	---

Railroading this fabric is not recommended.

Colors may vary slightly from swatch samples. All variations are within industry standards.

STYLE 7000

WIDTHS	94" and 118" 238.8 cm and 300 cm
ROLL LENGTH	30 Linear Yards 27.4 m
COMPOSITION	100% Polyester with Acrylic Flocked Backing
MESH WEIGHT	13.92 oz/yd ² 472.97 g/m ²
FABRIC THICKNESS	0.030 in 0.76 mm
OPENNESS FACTOR	Opaque
ACOUSTICAL VALUE	NRC .10 / SAA .08

PHIFER
INCORPORATED

P. O. Box 1700 • Tuscaloosa, Alabama 35403-1700 USA
Phone: 205.345.2120 • FAX: 205.391.0799
Toll Free USA/Canada: 1.800.221.5497
phifer.com • ISO Registered



© SheerWeave is a registered trademark of PHIFER INCORPORATED.
™ UL, the UL logos and the UL mark are trademarks of UL LLC.
Photo courtesy of Lafayette Venetian Blind, West Lafayette, Indiana, USA.
© PHIFER INCORPORATED V18 3033842



STYLE
7100
BLACKOUT FABRIC

WEAVING
EXCELLENCE
WITH
INNOVATION



Code	Color	SOLAR OPTICAL PROPERTIES				SHGC/G VALUE g-tot (glass & blind)	
		TS	RS	AS	TV	SINGLE 1/4 CL	INSULATING 1 HA
STYLE 7100 - BLACKOUT							
P02	White	0	71	29	0	0.23	0.19
V21	Charcoal	0	71	29	0	0.23	0.19



PROTECTION THAT LIVES ON

MICROBAN®

Microban® antimicrobial protection inhibits the growth of stain-causing bacteria, mold and mildew on the shade.



PRODUCT CERTIFIED FOR
LOW CHEMICAL EMISSIONS
UL.COM/GG
UL 2818



MIF Seal of Approval



TS = Solar Transmittance
RS = Solar Reflectance
AS = Solar Absorptance
TV = Visual Transmittance

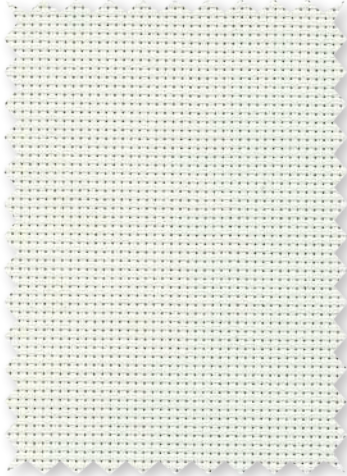
SHGC = Solar Heat Gain Coefficient

1/4 CL = 1/4" Clear Glass
1 HA = 1" Heat Absorbing Glass

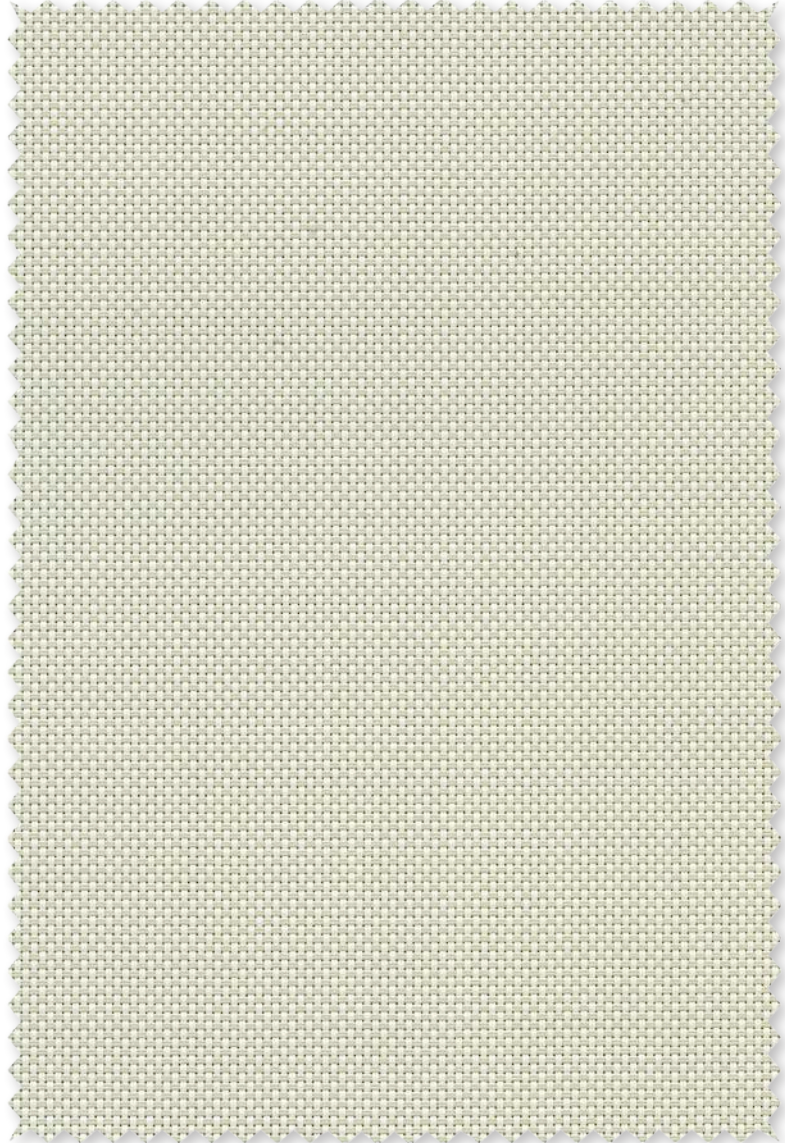
Fabrics Installed Internally
Zero-Degree Profile Angle

For additional performance values, test references and technical definitions visit us at www.phifer.com.

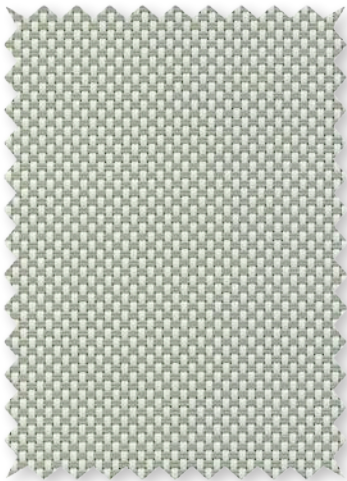
P02 **White**



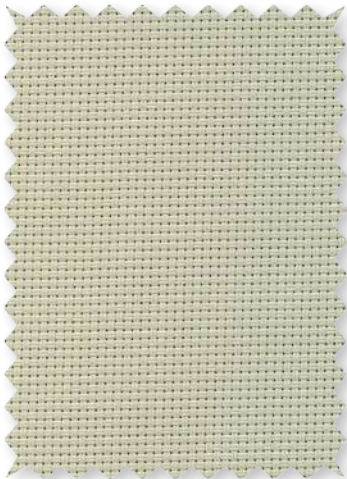
P04 **White/Bone**



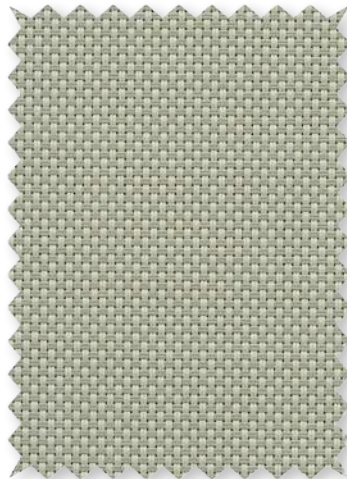
P05 **White/Platinum**



Q05 **Bone**



Q06 **Bone/Platinum**



V21 **Charcoal**



*Colors may vary based on individual computer settings and should only be used for general reference.

STYLE 7100 SPECIFICATIONS

Style 7100 is a durable laminated blackout fabric that combines the woven texture of our Style 2000 as the face fabric with a durable vinyl backing to achieve total light blockage. Style 7100 coordinates easily with other SheerWeave fabrics when multi-purpose shades are needed. All Style 7100 colors have a white backing.

FIRE CLASSIFICATION	California U.S. Title 19 (small scale) NFPA 101 (Class A Rating) BS 5867 Part 2 Type B Performance	NFPA 701 TM#1 (small scale) IBC Section 803.1.1 (Class A Rating) NFPA 701 TM#2 (large scale)
BACTERIA AND FUNGAL RESISTANCE	ASTM E 2180 GREENGUARD Mold and Bacteria Standard ASTM 6329 Style 2000 face includes Microban antimicrobial additives.	ASTM G21 AATCC30 Part 3 ASTM D 3273
ENVIRONMENTAL CERTIFICATION	GREENGUARD Certified to these standards for low chemical emissions into indoor air during product usage	GREENGUARD Gold
LEAD FREE	RoHS/Directive 2002/95/EC ANSI/WCMA A 100.1-2007 for lead content US Consumer Product Safety Commission Section 101	REACH (EC 1907/2006) compliant
WARRANTY	10-year interior	
ACOUSTICAL PERFORMANCE	NRC (Noise Reduction Coefficient) and SAA (Sound Absorption Average) tested in accordance with ASTM C423-09a	
UV PROTECTION	Seal of Approval by the Melanoma International Foundation (MIF) for effectiveness in preventing sun damage to the skin or eyes	
TRACKLESS	TrackLess Technology minimizes the fiberglass yarns' inherent tendencies to track when being rolled up in a shade. With TrackLess Technology these same fabrics now track less, roll up straighter and reduce shade fabrication time.	

Due to the construction of Style 7100, some cupping may occur. Railroadng this fabric is not recommended

STYLE 7100

WIDTHS	63" and 96" 160 cm and 243.8 cm
ROLL LENGTH	30 Linear Yards 27.4 m
COMPOSITION	Vinyl coated fiberglass fabric Laminated with a two-ply 100% PVC blackout film
MESH WEIGHT	21.6 oz/yd ² 732 g/m ²
FABRIC THICKNESS	0.025 in 0.64 mm
OPENNESS FACTOR	Opaque
ACOUSTICAL VALUE	NRC .05 / SAA .03

PHIFER
INCORPORATED

P. O. Box 1700 • Tuscaloosa, Alabama 35403-1700 USA
Phone: 205.345.2120 • FAX: 205.391.0799
Toll Free USA/Canada: 1.800.221.5497
phifer.com • ISO Registered



© SheerWeave is a registered trademark of PHIFER INCORPORATED.
© MICROBAN is a registered trademark of Microban Products Company.
™ UL, the UL logos and the UL mark are trademarks of UL LLC.
Photo courtesy of Rielamericano, Buenos Aires, Argentina.
© PHIFER INCORPORATED V17 3033843



STYLE

7500 / 7500R

7500 - BLACKOUT FABRIC

7500R - RESIDENTIAL
BLACKOUT FABRIC

WEAVING
EXCELLENCE
WITH
INNOVATION



Code	Color	SOLAR OPTICAL PROPERTIES				SHGC/G VALUE	
		TS	RS	AS	TV	<i>SINGLE</i> 1/4 CL	<i>INSULATING</i> 1 HA
STYLE 7500 - BLACKOUT							
R13	Ice	0	68	32	0	0.24	0.20
R22	Midnight	0	68	32	0	0.24	0.20
STYLE 7500R - BLACKOUT							
R44	Ice	0	68	32	0	0.24	0.20
R55	Midnight	0	68	32	0	0.24	0.20



PRODUCT CERTIFIED FOR
LOW CHEMICAL EMISSIONS
UL.COM/GG
UL 2818



MIF Seal of Approval



TS = Solar Transmittance
RS = Solar Reflectance
AS = Solar Absorptance
TV = Visual Transmittance

SHGC = Solar Heat Gain Coefficient

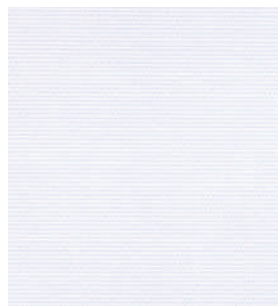
1/4 CL = 1/4" Clear Glass
1 HA = 1" Heat Absorbing Glass

Fabrics Installed Internally
Zero-Degree Profile Angle

For additional performance values, test references and technical definitions visit us at www.phifer.com.

STYLE 7500

R13 Ice



R39 **NEW** Cloud



R40 **NEW** Porcelain



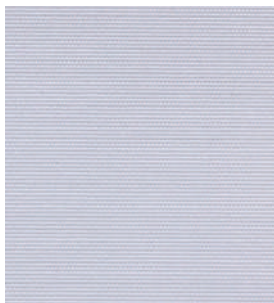
R17 Dune



R19 **NEW** Stone



R41 **NEW** Limestone



R97 Mist



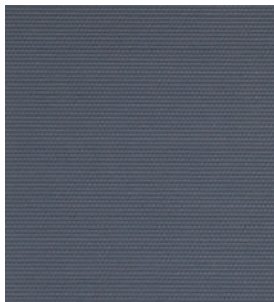
R42 **NEW** Nimbus



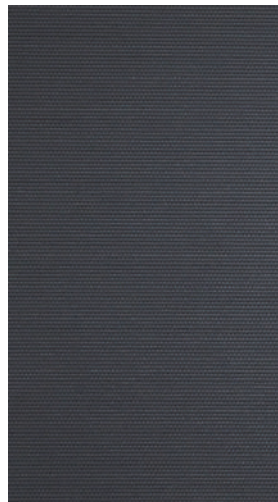
R43 **NEW** Tundra



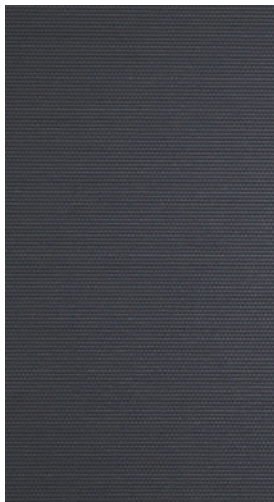
R20 **NEW** Odyssey



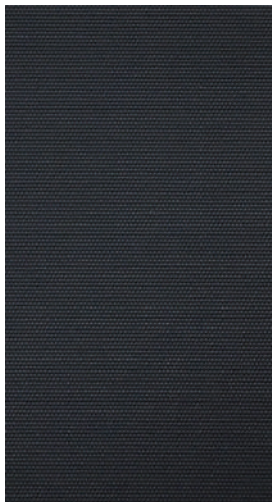
R21 Orient



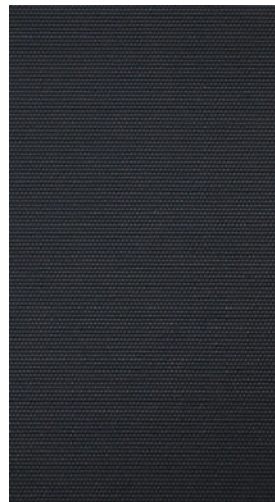
S97 **NEW** Orient x2



R22 Midnight

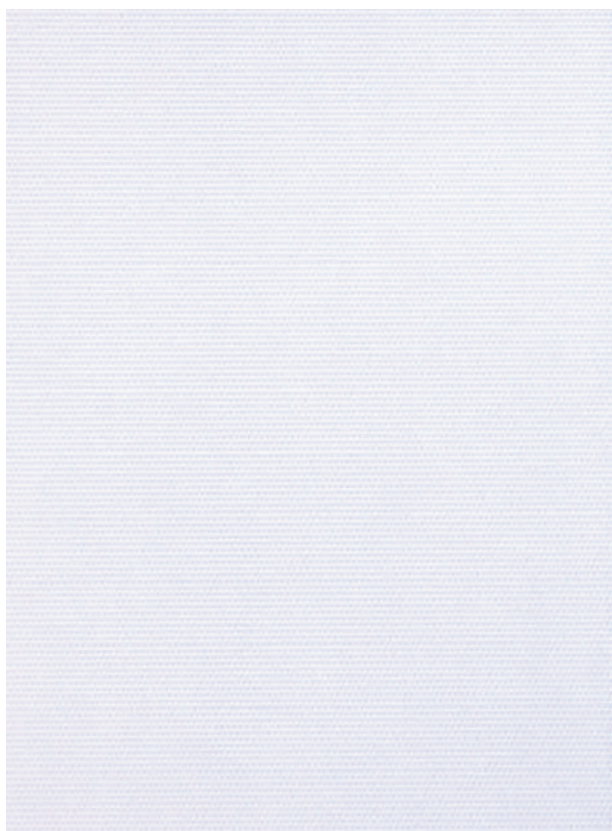


R99 **NEW** Midnight x2



STYLE 7500R RESIDENTIAL **NEW**

R44 **Ice**



R45 **Cloud**



R46 **Porcelain**



R51 **Dune**



R52 **Stone**



R47 **Limestone**



R48 **Mist**



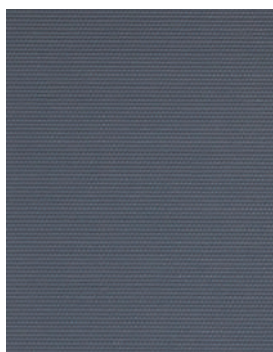
R49 **Nimbus**



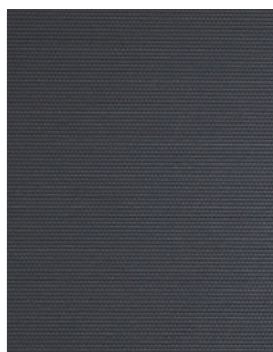
R50 **Tundra**



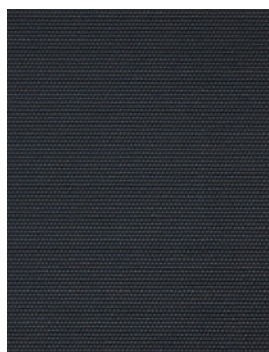
R53 **Odyssey**



R54 **Orient**



R55 **Midnight**



*Colors may vary based on individual computer settings and should only be used for general reference.



 **SHEERWEAVE**
BY PHIFER

STYLE 7500 / 7500R SPECIFICATIONS

This attractive blackout fabric maintains high quality at an economical price. Style 7500 is presented in a classic range of neutral colors with a unique PVC-free composition and is ideal for commercial applications. SheerWeave Style 7500 is an excellent option when total light blockage is needed and all Style 7500 colors have an off-white backing.

New Style 7500R, a companion to the Style 7500 range, maintains the same look and feel as its namesake at substantial cost savings and is designed specifically for residential use where commercial fire certifications are not required.

STYLE 7500 FIRE CLASSIFICATION	California U.S. Title 19 (small scale) CAN/ULC-S 109-03 (large and small scale) BS 5867 Part 2 Type B Performance	NFPA 701 TM#1 (small scale) IBC Section 803.1.1 (Class A Rating) NFPA 101 (Class A Rating)
STYLE 7500R FIRE CLASSIFICATION	California Technical Bulletin 117E NFPA 101 (Class A Rating)	
BACTERIA AND FUNGAL RESISTANCE	ASTM E 2180	ASTM G21
ENVIRONMENTAL CERTIFICATION	GREENGUARD	GREENGUARD Gold
	Certified to these standards for low chemical emissions into indoor air during product usage	
LEAD FREE	RoHS/Directive 2002/95/EC ANSI/WCMA A 100.1-2007 for lead content US Consumer Product Safety Commission Section 101	
WARRANTY	5-year interior	
ACOUSTICAL PERFORMANCE	NRC (Noise Reduction Coefficient) and SAA (Sound Absorption Average) tested in accordance with ASTM C423-09a	
UV PROTECTION	Seal of Approval by the Melanoma International Foundation (MIF) for effectiveness in preventing sun damage to the skin or eyes	
CLEANING INSTRUCTIONS	Fabric should be regularly dusted/vacuumed as appropriate. If commercial spot cleaners are used, they must first be tested and allowed to dry on an inconspicuous area to ensure compatibility.	
	<i>Railroading this fabric is not recommended. Colors may vary slightly from swatch samples. All variations are within industry standards.</i>	

STYLE	7500	7500R
WIDTHS	118" 300 cm	118" 300 cm
ROLL LENGTH	30 Linear Yards 27.4 m	30 Linear Yards 27.4 m
COMPOSITION	100% Polyester with Acrylic Coating	100% Polyester with Acrylic Coating
MESH WEIGHT	12.14 oz/yd ² 412 g/m ²	12.14 oz/yd ² 412 g/m ²
FABRIC THICKNESS	0.014 in 0.356 mm	0.014 in 0.356 mm
OPENNESS FACTOR	Opaque	Opaque
ACOUSTICAL VALUE	NRC .00 / SAA .03	NRC .00 / SAA .03

PHIFER
INCORPORATED

P. O. Box 1700 • Tuscaloosa, Alabama 35403 -1700 USA
Phone: 205.345.2120 • FAX: 205.391.0799
Toll Free USA/Canada: 1.800.221.5497
phifer.com • ISO Registered



© SheerWeave is a registered trademark of PHIFER INCORPORATED.
™ UL, the UL logos and the UL mark are trademarks of UL LLC.
Photo courtesy of Hunter Douglas, South America.
© PHIFER INCORPORATED V18 3033844



SHEERWEAVE

BY PHIFER®

BASIC
3% / 5%

WEAVING
EXCELLENCE
WITH
INNOVATION



Code	Color	SOLAR OPTICAL PROPERTIES				SHGC/G VALUE	
		TS	RS	AS	TV	<i>SINGLE</i> 1/4 CL	<i>INSULATING</i> 1 HA
BASIC 3%							
P02	White	15	64	21	16	0.29	0.22
P04	White/Bone	12	58	30	11	0.32	0.23
P05	White/Platinum	8	50	42	8	0.36	0.25
V21	Charcoal	1	4	95	2	0.60	0.37
V22	Charcoal/Gray	1	8	91	2	0.57	0.36
V24	Charcoal/Chestnut	1	5	94	1	0.58	0.37
BASIC 5%							
P02	White	19	68	13	17	0.29	0.22
P04	White/Bone	16	60	24	14	0.32	0.23
P05	White/Platinum	11	53	36	11	0.36	0.25
V21	Charcoal	6	4	90	6	0.61	0.37
V22	Charcoal/Gray	7	9	84	7	0.58	0.36
V24	Charcoal/Chestnut	7	6	87	8	0.60	0.37



PROTECTION THAT LIVES ON 
MICROBAN[®]
 Microban[®] antimicrobial protection inhibits the growth of stain-causing bacteria, mold and mildew on the shade.



PRODUCT CERTIFIED FOR LOW CHEMICAL EMISSIONS
 UL.COM/GG
 UL 2818



MIF Seal of Approval



TS = Solar Transmittance
 RS = Solar Reflectance
 AS = Solar Absorptance
 TV = Visual Transmittance

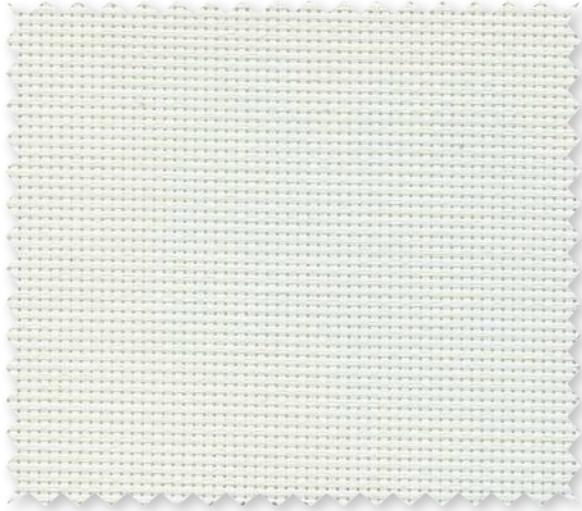
SHGC = Solar Heat Gain Coefficient

1/4 CL = 1/4" Clear Glass
 1 HA = 1" Heat Absorbing Glass

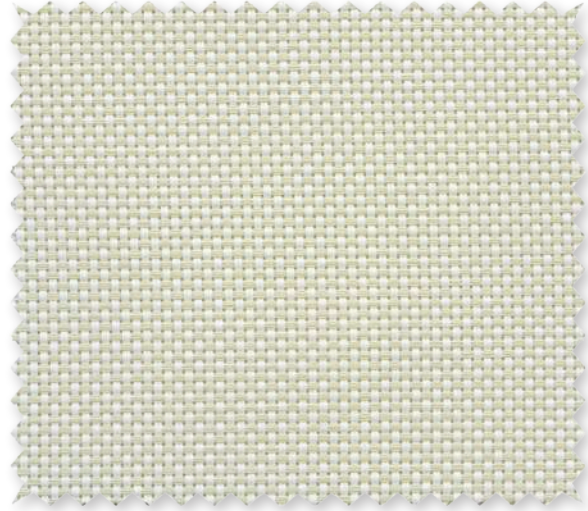
Fabrics Installed Internally
 Zero-Degree Profile Angle

For additional performance values, test references and technical definitions visit us at www.phifer.com.

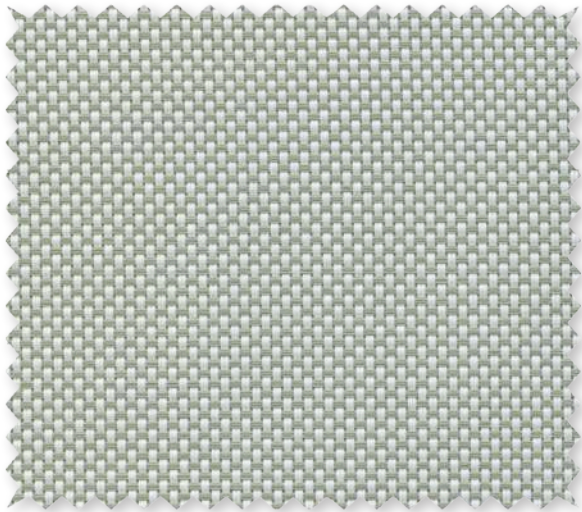
P02 **White**



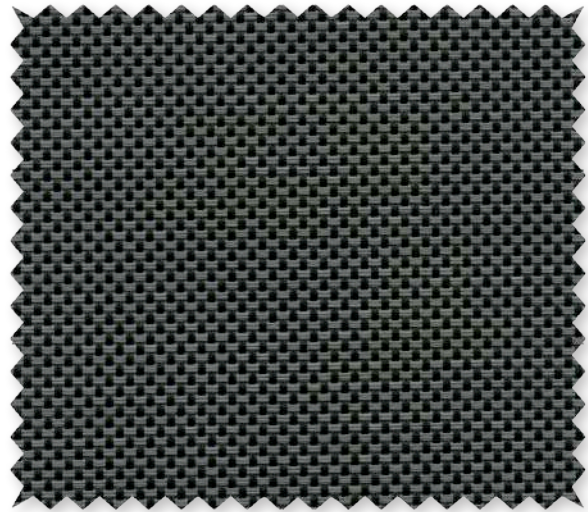
P04 **White/Bone**



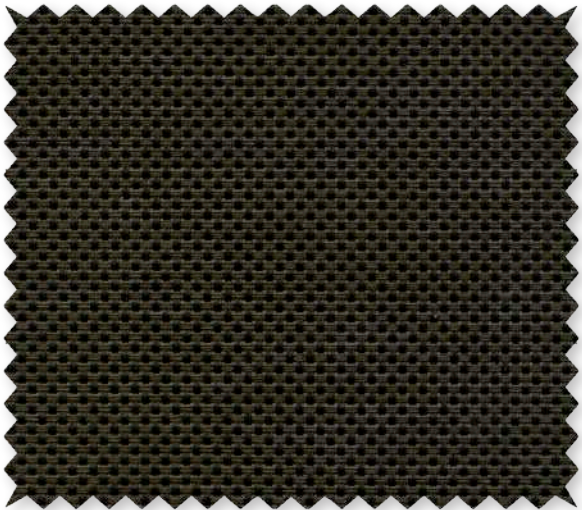
P05 **White/Platinum**



V22 **Charcoal/Gray**



V24 **Charcoal/Chestnut**



V21 **Charcoal**



*Colors may vary based on individual computer settings and should only be used for general reference.

STYLE BASIC 3% / 5% SPECIFICATIONS

With all the benefits, certifications, and technical specifications you have come to expect, SheerWeave BASIC is uniquely designed for the demanding and competitive commercial market and is an ideal choice for your spec-driven projects. A more robust fiberglass core yarn gives SheerWeave BASIC the added durability high traffic areas and public spaces require. Suitable for all types of interior window shade applications, SheerWeave BASIC is an economical alternative to traditional solar screen fabrics. BASIC 3% has exceptional sound absorbing performance for an added acoustical benefit. SheerWeave BASIC fabrics can also be used in exterior shading systems.

FIRE CLASSIFICATION	California U.S. Title 19 (small scale)	NFPA 701 TM#1 (small scale)
	NFPA 101 (Class A Rating)	IBC Section 803.1.1 (Class A Rating)
	BS 5867 Part 2 Type B Performance	NFPA 701 TM#2 (large scale)
	CAN/ULC-S 109 (large and small scale)	CAN/CGSB2-4.162-M80

Fire classifications are subject to change. Please go to phifer.com for the most current information.

BACTERIA AND FUNGAL RESISTANCE	ASTM E 2180	ASTM G21	AATCC30 Part 3	ASTM D 3273
	GREENGUARD Mold and Bacteria Standard ASTM 6329 includes Microban antimicrobial additives			

ENVIRONMENTAL CERTIFICATION	GREENGUARD	GREENGUARD Gold
	Certified to these standards for low chemical emissions into indoor air during product usage	

LEAD FREE	RoHS/Directive 2002/95/EC	REACH (EC 1907/2006) compliant
	ANSI/WCMA A 100.1-2007 for lead content	
	US Consumer Product Safety Commission Section 101	

WARRANTY	10-year interior	5-year exterior
-----------------	------------------	-----------------

ACOUSTICAL PERFORMANCE	NRC (Noise Reduction Coefficient) and SAA (Sound Absorption Average) tested in accordance with ASTM C423-09a	
-------------------------------	--	--

UV PROTECTION	Seal of Approval by the Melanoma International Foundation (MIF) for effectiveness in preventing sun damage to the skin or eyes	
----------------------	--	--

TRACKLESS	TrackLess Technology minimizes the fiberglass yarns' inherent tendencies to track when being rolled up in a shade. With TrackLess Technology these same fabrics now track less, roll up straighter and reduce shade fabrication time.	
------------------	---	--

BASIC

3%

5%

WIDTHS	98" 248.9 cm	98" 248.9 cm
ROLL LENGTH	30 Linear Yards 27.4 m	30 Linear Yards 27.4 m
COMPOSITION	38% Fiberglass 62% Vinyl on Fiberglass	38% Fiberglass 62% Vinyl on Fiberglass
MESH WEIGHT	16.4 oz/yd ² 556 g/m ²	14.1 oz/yd ² 478 g/m ²
FABRIC THICKNESS	0.025 in 0.64 mm	0.022 in 0.56 mm
OPENNESS FACTOR	Approximately 3%	Approximately 5%
UV BLOCKAGE	Approximately 97%	Approximately 95%
ACOUSTICAL VALUE	NRC .60 / SAA .60	NRC .10 / SAA .08

PHIFER
INCORPORATED

P. O. Box 1700 • Tuscaloosa, Alabama 35403-1700 USA
Phone: 205.345.2120 • FAX: 205.391.0799
Toll Free USA/Canada: 1.800.221.5497
phifer.com • ISO Registered

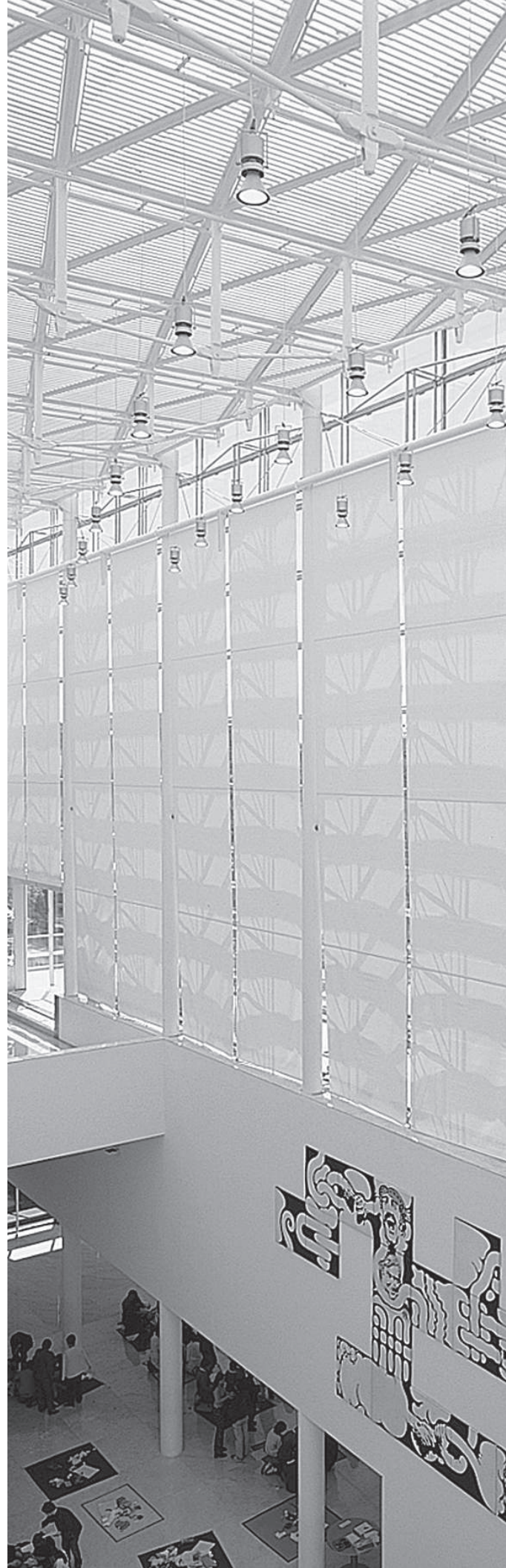


© SheerWeave is a registered trademark of PHIFER INCORPORATED.
© MICROBAN is a registered trademark of Microban Products Company.
™ UL, the UL logos and the UL mark are trademarks of UL LLC.
Photo courtesy of Draper INC., Spiceland, Indiana, USA.
© PHIFER INCORPORATED V18 3033846



INFINITY₂[®]
SUSTAINABLE FABRIC

WEAVING
EXCELLENCE
WITH
INNOVATION



Benefits of Infinity₂ include:

- 100% recyclable with active Reclamation Program that captures scrap from post-industrial (pre-consumer) and post-consumer sources
- Produced from 100% post-industrial (pre-consumer) recycled content
- Repeat recyclability for continued sustainability
- PVC-free
- Phthalate-free
- Lead-free
- Every component of this TPO compound is heat and chemically stable.
- Resistant to microbial and fungal growth
- Durable and washable

Code	Color	SOLAR OPTICAL PROPERTIES				SHGC/G VALUE	
		TS	RS	AS	TV	SINGLE 1/4 CL	INSULATING 1 HA
INFINITY₂ - 1%							
PG1	Cotton	20	68	12	18	0.29	0.22
PG2	Almond	15	61	24	12	0.31	0.23
PG3	Wheat	12	54	34	10	0.35	0.25
PG4	Stone	13	55	32	11	0.35	0.24
QG1	Barley	18	52	30	15	0.37	0.26
VG1	Nickel	8	37	55	7	0.42	0.30
VG2	Midnight	1	63	93	2	0.59	0.37
VG3	Bark	3	7	90	5	0.58	0.37
VG4	Slate	2	9	89	4	0.57	0.36
INFINITY₂ - 3%							
PG1	Cotton	20	70	10	19	0.28	0.21
PG2	Almond	17	61	22	15	0.32	0.23
PG3	Wheat	12	52	36	9	0.37	0.25
PG4	Stone	12	52	36	11	0.37	0.25
QG1	Barley	16	53	31	14	0.37	0.25
VG1	Nickel	9	36	55	8	0.44	0.30
VG2	Midnight	3	6	91	5	0.59	0.37
VG3	Bark	3	7	90	4	0.58	0.37
VG4	Slate	3	10	87	5	0.57	0.36
INFINITY₂ - 5%							
PG1	Cotton	23	68	9	22	0.30	0.22
PG2	Almond	20	60	20	18	0.33	0.23
PG3	Wheat	14	51	35	12	0.37	0.26
PG4	Stone	15	52	33	14	0.37	0.25
QG1	Barley	19	51	30	17	0.38	0.26
VG1	Nickel	10	34	56	11	0.45	0.30
VG2	Midnight	5	6	89	8	0.60	0.37
VG3	Bark	4	7	89	6	0.59	0.37
VG4	Slate	5	9	86	7	0.58	0.36



The Next Generation of Sustainable Fabric



PRODUCT CERTIFIED FOR
LOW CHEMICAL EMISSIONS
UL.COM/GG
UL 2818



MIF Seal of Approval



TS = Solar Transmittance
RS = Solar Reflectance
AS = Solar Absorptance
TV = Visual Transmittance

SHGC = Solar Heat Gain Coefficient

1/4 CL = 1/4" Clear Glass
1 HA = 1" Heat Absorbing Glass

Fabrics Installed Internally
Zero-Degree Profile Angle

For additional performance values, test references and technical definitions visit us at www.phifer.com.

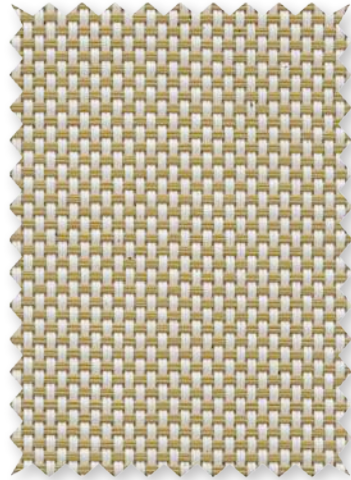
PG1 Cotton



PG2 Almond



PG3 Wheat



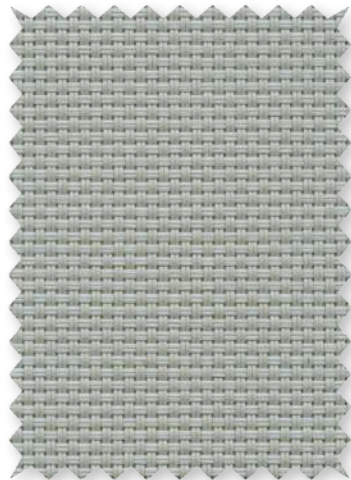
PG4 Stone



QG1 Barley



VG1 Nickel



VG2 Midnight



VG3 Bark



VG4 Slate



INFINITY₂ SPECIFICATIONS

SheerWeave Infinity₂ sustainable sun control fabrics are eco-friendly full basketweaves designed to meet the most stringent environmental design standards. With 100% recycled content, 100% recyclable, and a PVC-free composition, Infinity₂ fabrics offer the same solar heat and glare control properties as traditional SheerWeave fabrics for conserving energy, harnessing natural light and maintaining interior comfort levels.

FIRE CLASSIFICATION	NFPA 701 TM#1 (small scale)	NFPA 101 (Class A Rating)
	CAN/ULC-S 109 (large scale)	IBC Section 803.1.1 (Class A Rating)
	CAN/CGSB2-4.162-M80	BS 5867 Part 2 Type B Performance

Fire classifications are subject to change. Please go to phifer.com for the most current information.

BACTERIA AND FUNGAL RESISTANCE	ASTM E 2180	ASTM G21
---------------------------------------	-------------	----------

ENVIRONMENTAL CERTIFICATION	GREENGUARD	GREENGUARD Gold
	Certified to these standards for low chemical emissions into indoor air during product usage	

LEAD FREE	RoHS/Directive 2002/95/EC	REACH (EC 1907/2006) compliant
	ANSI/WCMA A 100.1-2007 for lead content	
	US Consumer Product Safety Commission Section 101	

WARRANTY 5-year interior

ACOUSTICAL PERFORMANCE	NRC (Noise Reduction Coefficient) and SAA (Sound Absorption Average) tested in accordance with ASTM C423-09a	
-------------------------------	--	--

UV PROTECTION	Seal of Approval by the Melanoma International Foundation (MIF) for effectiveness in preventing sun damage to the skin or eyes	
----------------------	--	--

STYLE	1%	3%	5%
WIDTHS	63" and 98" 160 cm and 248.9 cm	63" and 98" 160 cm and 248.9 cm	63" and 98" 160 cm and 248.9 cm
ROLL LENGTH	30 Linear Yards 27.4 m	30 Linear Yards 27.4 m	30 Linear Yards 27.4 m
COMPOSITION	100% TPO (Thermoplastic Olefin) 20% TPO fiber yarn 80% TPO coating on TPO yarn	100% TPO (Thermoplastic Olefin) 20% TPO fiber yarn 80% TPO coating on TPO yarn	100% TPO (Thermoplastic Olefin) 20% TPO fiber yarn 80% TPO coating on TPO yarn
MESH WEIGHT	14.63 oz/yd ² 496.03 g/m ²	13.69 oz/yd ² 464.17 g/m ²	12.82 oz/yd ² 434.67 g/m ²
FABRIC THICKNESS	0.032 in 0.813 mm	0.031 in 0.787 mm	0.030 in 0.762 mm
OPENNESS FACTOR	Approximately 1%	Approximately 3%	Approximately 5%
UV BLOCKAGE	Approximately 99%	Approximately 97%	Approximately 95%
ACOUSTICAL VALUE	NRC .20 / SAA .23	NRC .20 / SAA .19	NRC .10 / SAA .11

PHIFER
INCORPORATED

P. O. Box 1700 • Tuscaloosa, Alabama 35403 -1700 USA
Phone: 205.345.2120 • FAX: 205.391.0799
Toll Free USA/Canada: 1.800.221.5497
phifer.com • ISO Registered



© SheerWeave and SheerWeave Infinity are registered trademark of PHIFER INCORPORATED.
™ UL, the UL logos and the UL mark are trademarks of UL LLC.
Cover photo courtesy of Rielamericano, Buenos Aires, Argentina.
© PHIFER INCORPORATED V18 3033845